

The world's favorite lock



Floor Spring



Floor Springs

Floor Springs

The Yale floor spring range has been specifically designed to meet most situations where pivoted single or double action doors require positive and consistent operation.

Innovative design enables flexibility over a wide range of applications. Designed and manufactured to world class standards ensures the highest possible quality, efficient and reliable performance.

FS923 Floor Spring

- Double Action Floor Spring
- Castrolon Body
- Dual Valve Adjusting, closing and latching speed
- Maximum opening angle in each direction of 120°
- Applicable for timber, glass and aluminium door
- Power Fixed Size 3
- Size 3 - Max. weight of door 100kg

FS934 Double Cylinder Floor Spring

- Double Action Floor Spring
- Castrolon Body
- Dual Valve Adjusting, closing and latching speed
- Maximum opening angle in each direction of 130°
- Applicable for timber, glass and aluminium door
- Power Fixed Size 4
- Size 4 - Max. weight of door 120kg



FS 923

923 Series Single Cylinder Floor Spring

Features

- Tested to EN1154: Product performance standard
- Double Action Floor Spring
- Cast Iron Body
- Dual Valve Adjusting, closing and latching speed
- Maximum opening angle in each direction of 120°
- Applicable for timber, glass and aluminum door
- Power Fixed Size 3
- Adjustment within Cement Box
- Height 4mm Adjustment
- Width 5mm Adjustment
- Left to Right 6mm Adjustment
- Max. weight of door: 100kg



Part Description:

Yale Floor Spring - Cast Iron Body - Fixed Size 3

Standard Spindle

Standard spindle included is 10mm

Cement Box

Hot zinc plated steel

Cover Plate Finish

Satin Stainless Steel (Standard) - US32D

Product Information

Type and Door Weight

FS 923 Technical Info. & Function			Size 3
Closing Force (N - m) 0 °- 4°			18 ~ 26
Width of door (mm) Max			1000
Weight of door (kg) Max			100
Max open angle			120°
Hold open			90° or 105°
Closing speed Adjustment	Speed 1	90° to 25°	
	Speed 2	25° to 0°	
Removeable spindle			Optional
Applicable temperature			-20°C to 45°C
Applicability			Wooden, glass & aluminium door etc. Left-open, right-open, single-side open or both side open.
Weight (kg)			4.6
Dimension of cement Box (mm)	Length	275	
	Width	108	
		40.5	
Passed durability test			500,000 cycles

FS 934

934 Series Double Cylinder Floor Spring

- Tested to EN1154: Product performance standard
- Double Action Floor Spring
- Cast Iron Body
- Dual Valve Adjusting, closing and latching speed
- Maximum opening angle in each direction of 130°
- Applicable for timber, glass and aluminum door
- Power Fixed Size 4
- Adjustment within Cement Box
- Height 4mm Adjustment
- Width 5mm Adjustment
- Left to Right 7mm Adjustment
- Max. weight of door: 120kg



Part Description:

Yale Floor Spring - Cast Iron Body - Fixed Size 4

Standard Spindle

Standard spindle included is 10mm

Cement Box

Hot zinc plated steel

Cover Plate Finish

Satin Stainless Steel (Standard) - US32D

Product Information

Type and Door Weight

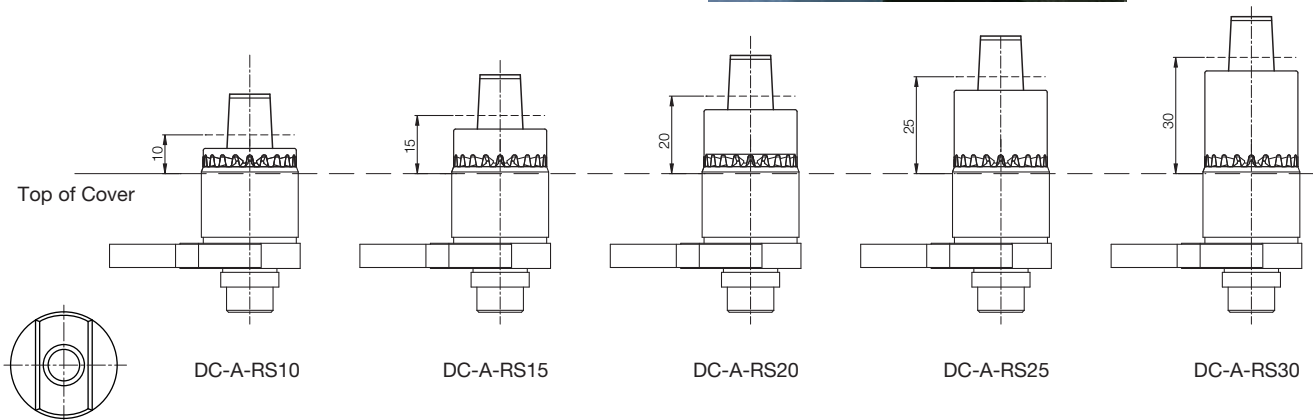
FS 934 Technical Info. & Function			Size 4
Closing Force (N - m) 0 ° - 4°			26 ~ 37
Width of door (mm) Max			1200
Weight of door (kg) Max			120
Max open angle			130°
Hold open			90° or 105°
Closing speed Adjustment	Speed 1	90° to 25°	
	Speed 2	25° to 0°	
Removeable spindle			Optional
Applicable temperature			-20°C to 45°C
Applicability			Wooden, glass & aluminium door etc. Left-open, right-open, single-side open or both side open.
Weight (kg)			5.2
Dimension of cement Box (mm)	Length	305	
	Width	108	
		40.5	
Passed durability test			500,000 cycles

Floor Springs

Accessories

Removable Spindle

Model No:			
DC-A-RS10	Removable spindle	10mm	Standard
DC-A-RS15	Removable spindle	15mm	Optional
DC-A-RS20	Removable spindle	20mm	Optional
DC-A-RS25	Removable spindle	25mm	Optional
DC-A-RS30	Removable spindle	30mm	Optional



AB Accessories (Iron - Adjustable)

Model No:
DC-A-T&BI-A (Standard)

Description:
Top Pivot & Bottom Arm (Iron - Double Action), Standard parts



Single Acting Door Accessories (Optional)

Model No:
DC-A-T&BI-SA (Optional)

Description:
Top Pivot & Bottom Arm (Iron - Single Action)



Top Pivot

TLG 502 . 15 . SSS

All dimensions are in mm

Floor Spring

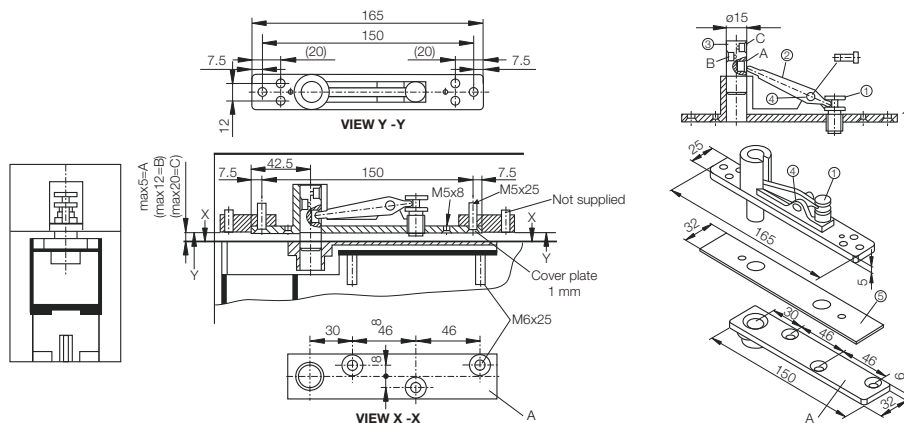
How to order		
Ordering No.	Product Description	Finish
ES934-EN4	Floor Closer with Removable Spindle – Size 4 (with stainless steel cover plate) Satin Stainless Steel (Standard) – US32D	Satin Stainless Steel (Standard) – US32D
FS923-EN3	Floor Closer with Removable Spindle – Size 3 (with stainless steel cover plate) Satin Stainless Steel (Standard) – US32D	Satin Stainless Steel (Standard) – US32D
DC-A-RS10	Accessories - Removal Spindle 10 mm	
DC-A-RS15	Accessories - Removal Spindle 15 mm	
DC-A-RS20	Accessories - Removal Spindle 20 mm	
DC-A-RS25	Accessories - Removal Spindle 25 mm	
DC-A-RS30	Accessories - Removal Spindle 30 mm	
DC-A-T&B I-A	Accessories - Top Pivot & Bottom Arm (Iron - Double Action)	
DC-A-T&B I-SA	Accessories - Top Pivot & Bottom Arm (Iron - Single Action)	
TLG 502 . 15 . SSS	Top Pivot	

*Please specify different accessories type and/or hold-open degree when required.

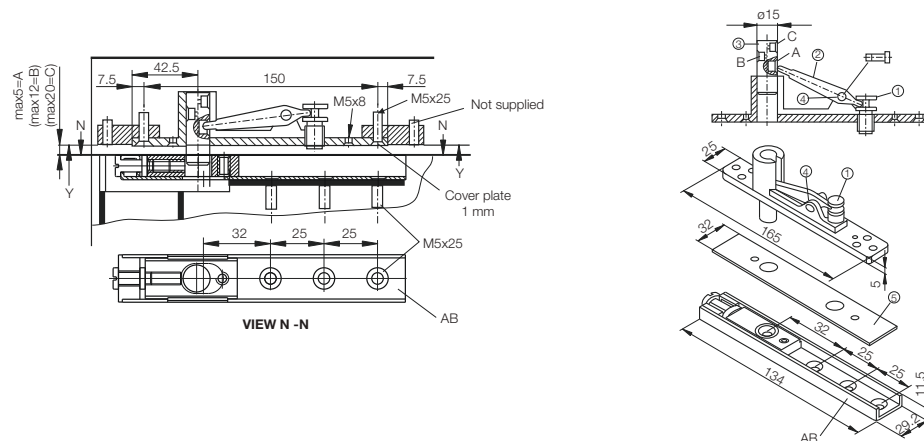
Floor Springs

FS934 Standard Installation

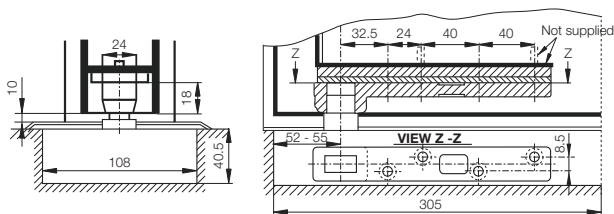
Top of door frame – A Accessories



Top of door frame – AB Accessories

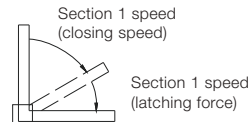
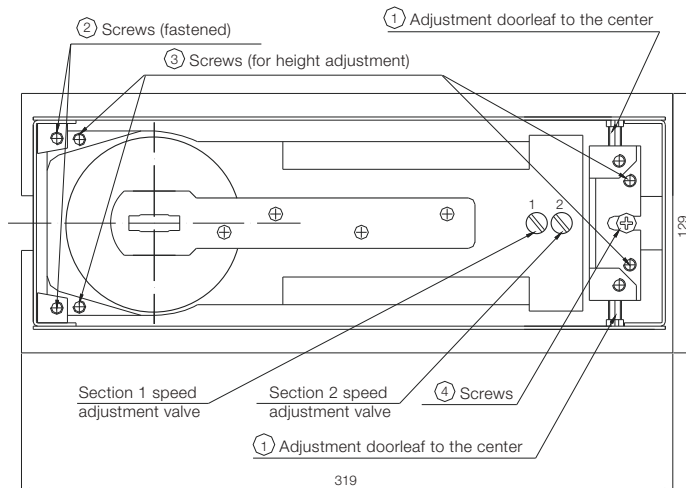


Bottom of Door



Floor Spring

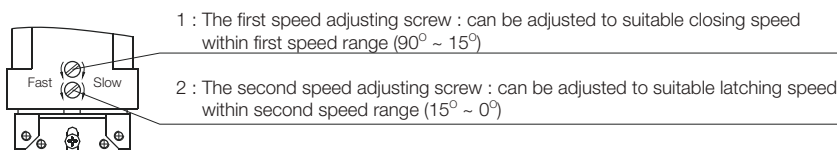
Adjustment of Closing Speed



Doorleaf positioning and adjustment of closing speed

1. Adjust screws 2 and 4 to keep the center of the floor closer pivot in axial line with the center of the top - frame pivot.
2. Adjust screws 1 to allow the doorleaf to stop at the intended position.
3. Adjust screws 3 to keep doorleaf parallel to the ground and the floor closer.
4. By turning the valves clockwise both section 1 closing speed and section 2 latching force will decrease; turning the valves anti-clockwise both section 1 closing speed and section 2 latching force will increase.

Closing and Latching Adjustment



1 : The first speed adjusting screw : can be adjusted to suitable closing speed within first speed range ($90^\circ \sim 15^\circ$)

2 : The second speed adjusting screw : can be adjusted to suitable latching speed within second speed range ($15^\circ \sim 0^\circ$)

Notes

- Install it on the suitable door accordingly.
- Don't open the door beyond 130° in case of damage.
- Don't turn the screw of regulating valves on 1,2 thoroughly out in case of oil leakage, only adjust them slightly.

Specification Service

For all Architectural hardware specification assistance refer to your local ASSA ABLOY Sales Office.

A fully comprehensive, obligation free, Architectural Door Hardware specification can be prepared by Architectural Hardware Consultants.

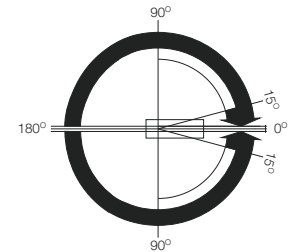
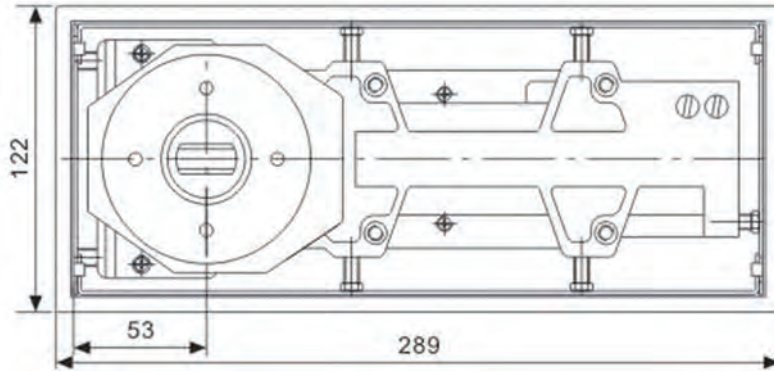
Cleaning

Care should be taken during construction/refurbishment to ensure that paint, thinners, mortar or cement splashes are carefully removed from locks, furniture and hardware. Removal of these splashes with strong cleaning agents or scourers should be avoided.

Dirt and grime should be regularly removed with a soft and clean cloth. Do not use solvent based or abrasive cleaning agents. During cleaning, care should be taken to prevent cleaning solution from entering the cylinder keyway. Surfaces should be dried and possibly lubricated.

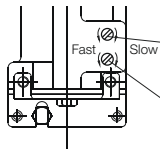
Floor Spring

Dimensions



Notes : 90° hold - open position optional

Closing and Latching Adjustment



1 : The first speed adjusting screw : can be adjusted to suitable closing speed within first speed range (90° ~ 15°)

2 : The second speed adjusting screw : can be adjusted to suitable latching speed within second speed range (15° ~ 0°)

Notes

A. Install it on the suitable door accordingly.

B. Don't turn the screw of regulating valves on 1,2 thoroughly out in case of oil leakage, only adjust them slightly.

SWORD

Hydraulic Compact Hinge



Overview

- Simple, clear and modern design
- Patch fitting with self closing
- Quick and easy to install
- Cost effective and easy to maintain

Features

- EN2 / EN3 Fixed Power
- Glass Door Thickness: 8~13mm
- Independent Sweep/Latching Speed Control Valve
 - Sweep: 130° ~ 15°
 - Latching: 15° ~ 0°
- Standard Back Check
- Mechanical hold open (90 or 105°)
- Efficiency: More than 70% for smooth opening and closing
- DIM.(mm) : 200 x 42 x 80

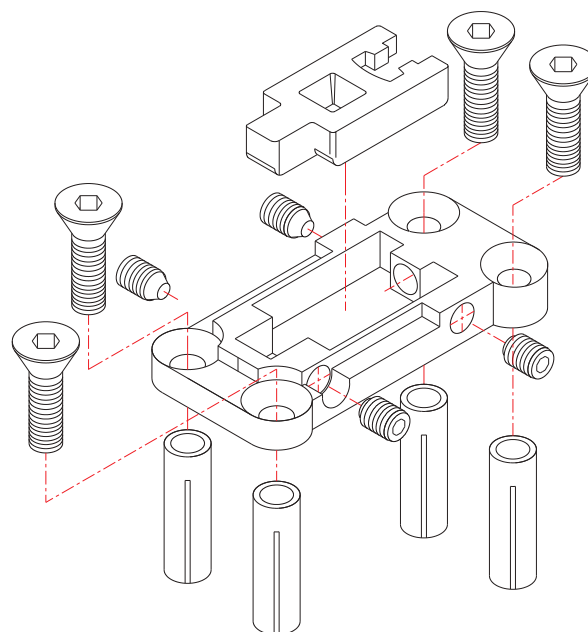
Selection Charts

Standard Installation		Door Width (mm)	Door Weight (kg)	Max. Opening Angle	Hold Open Angle
Model	Power				
KCH2	EN 2	750	60	150°	105°
KCH3	EN 3	1000	80		Or 90°

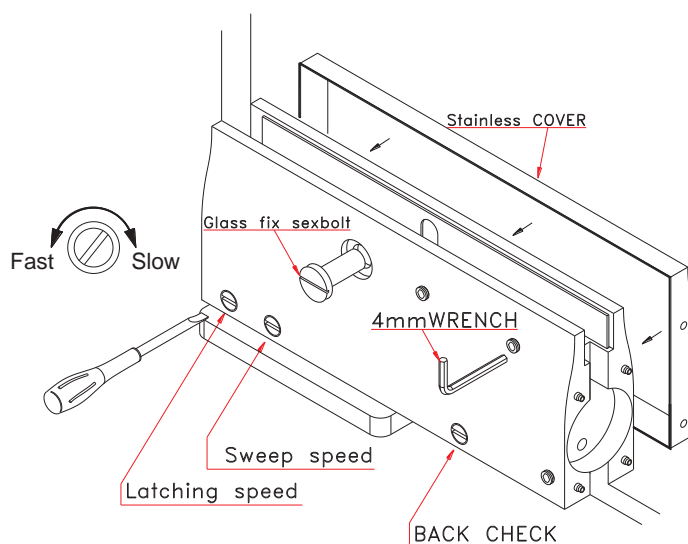
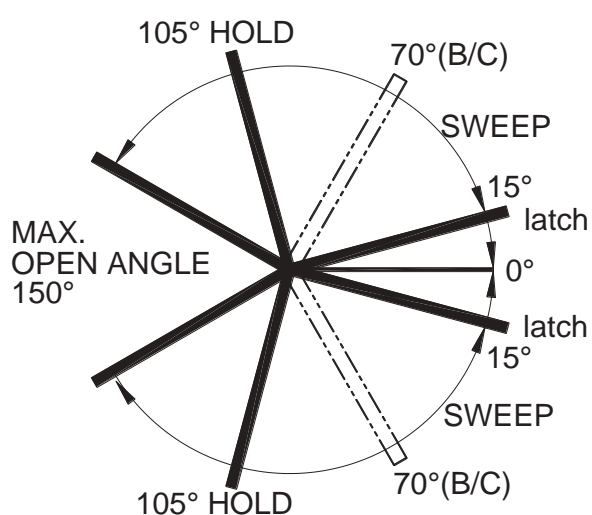
Compliance

- EN1154
- UL/cUL

-
- 4-ø10
Drill D.P.
Min 50
- FRAME
- 30
- 83
- 32



BOTTOM BRACKET



INSTALLATION