



Panic Exit Device

ASSA ABLOY

The global leader in
door opening solutions

ASSA ABLOY Panic Exit Device

Features & Benefits

Panic Exit Devices

Key features:

- Surface mounted
- Slim, neat design, surface mounted
- 2,00,000 cycles tested
- Fire rated
- Wide range of option

Benefits:

- Ease of installation
- Superior aesthetics
- High durability
- Suitable for fire rated doors
- External cylinder and lever option available

Standard & Certification

BS EN 1125
EN1634

Technical details:

- Cross and Push bar
- Modular type – stock reduction
- 1, 2, 3 locking point versions (vertical and lateral) – RIM
- For doors up to 1200 x 2400mm in standard
- Easy installation and adjustment
- Wide range of finishes
- Compatible accessories
- Wide range of outside trims
- Hold Open and Micro switch versions
- Glass door kit
- Certified according to EN 1125:2008
- Durability of 2,00,000 cycles
- For Fire Rated applications (not HO version)
- Suitable for single and double doors



This new range of product is based on a new modular concept and a common design, under a unique platform for both push and cross bar panic exit devices.

Panic Exit Device

Panic Exit Devices standard finishes

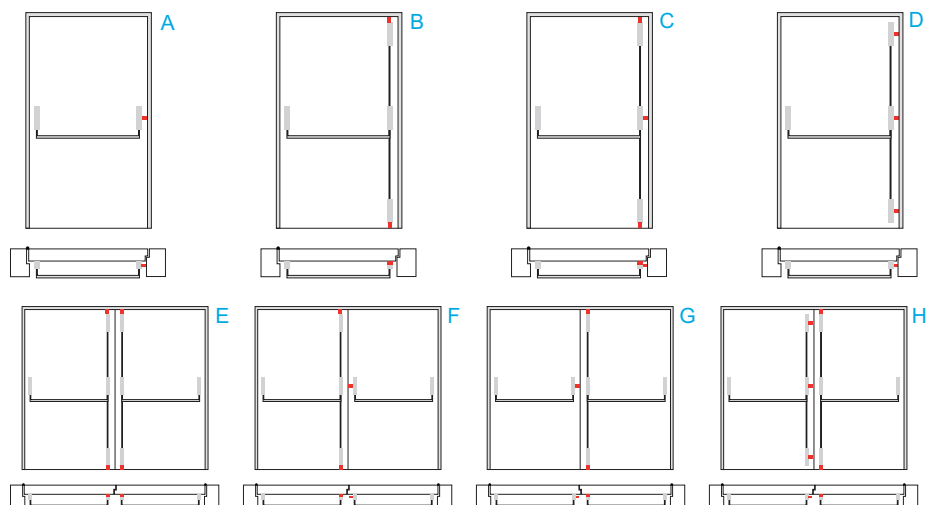
Cross bar:

Cover & Fix bar		Tube		
		Red (RAL 3000)	Silver (RAL 9006)	S/Steel
		R	G	I
Black (RAL 9000)	N	NR		
Silver (RAL 9006)	G		GG	
S/Steel effect	S			SI
S/Steel	I			II

Push bar:

Cover & Fix bar		Active bar		
		Red (RAL3000)	Silver (RAL 9006)	S/Steel
		R	G	I
Black (RAL 9000)	N	NR		
Silver (RAL 9006)	G		GG	
S/Steel effect	S			SI

Typical door installation

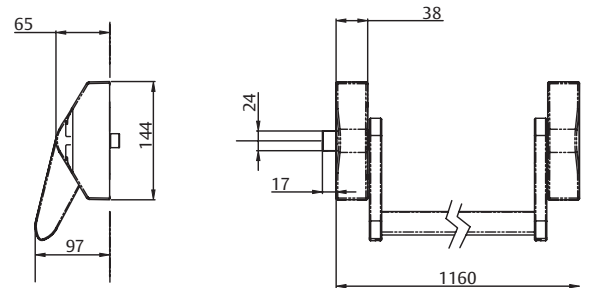
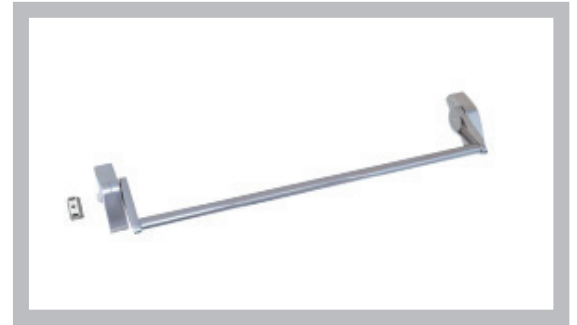


Panic Exit Device - Cross Bar

**Panic Exit Device
PED 200
Cross Bar - Rim
Device**

ASSA ABLOY PED 200:

- Panic exit device with central locking point - RIM



**Panic Exit Device
Characteristics of
PED 200**

Characteristics of PED 200:

- Modular cross bar type
- For fire and smoke applications
- High durability 2,00,000 cycles
- One central locking point
- For one or double leaf door up to 200 kg
- For all types of door
- For doors up to 1200 mm width in standard
- For doors up to 1400 mm width in option
- Steel pulman latch in standard
- Dead latch in standard
- Zinc alloy or s/steel cover 38 mm width
- Steel or s/steel bar 1075 mm long
- Bar to be cut
- 97 mm projection
- HO function in option
- Micro switch version in option

CE	ASSA ABLOY EAST EUROPE Dolníměcholupská 1418/12 102 00 Praha 10 Czech Republic	12
	1239 / 0814901	3 7 6 0 / 1 3 2 2 A A
UNE-EN 1125: 2009		



Panic Exit Device - Cross Bar

Panic Exit Device
PED 200
Cross Bar - Rim
Device

Ordering details

Model no.	Part no.	Type	Description
PED 200/--/GG	MNAT101M02SGGAA	Cross bar	Central locking point PED with steel latch and dead latch, 1200 mm wide door, silver support and bar
PED 200/--/NR	MNAT101M02SNRAA	Cross bar	Central locking point PED with steel latch and dead latch, 1200 mm wide door, black support and red bar
PED 200/--/SI	MNAT101M02SSIAA	Cross bar	Central locking point PED with steel latch and dead latch, 1200 mm wide door, s/steel effect support and s/steel bar
PED 200/--/II	MNAT101M02SIIAA	Cross bar	Central locking point PED with steel latch and dead latch, 1200 mm wide door, s/steel support and bar
PED 200/HO/ GG	MNAT111M02SGGAA	Cross bar	Central locking point PED with steel latch and dead latch, 1200 mm wide door, silver support and bar - HO function
PED 200/HO/ NR	MNAT111M02SNRAA	Cross bar	Central locking point PED with steel latch and dead latch, 1200 mm wide door, black support and red bar - HO function
PED 200/HO/ SI	MNAT111M02SSIAA	Cross bar	Central locking point PED with steel latch and dead latch, 1200 mm wide door, s/steel effect support and s/steel bar - HO function
PED 200/HO/II	MNAT111M02SIIAA	Cross bar	Central locking point PED with steel latch and dead latch, 1200 mm wide door, s/steel support and bar - HO function

Panic Exit Trim
Specifications

Outside Device	Blind Plate	Modular Lever Handle
No outside opening	•	•
Free passing door		•
Cylinder locking - knob / lever handle opening		•

Panic Exit Device - Cross Bar

Panic Exit Device PED 200 + PED/GV

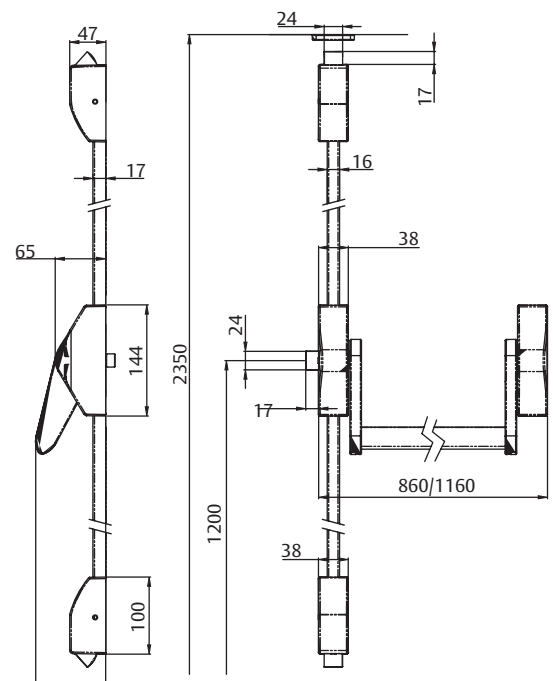
Cross Bar - Vertical
Device
Vertical locking
points

ASSA ABLOY PED 200 + PED/GV:

- Set of 2/3 locking points PED composed of Modular Cross Bar and kit for 2 vertical locking points

Characteristics of PED 200:

- Modular cross bar type
- For fire and smoke applications
- High durability 2,00,000 cycles
- One central locking point
- For one or double leaf door up to 200 kg
- For all types of door
- For doors up to 1200 mm width in standard
- For doors up to 1400 mm width in option
- Dead latch in standard
- Steel swing latch
- Zinc alloy or s/steel cover 38 mm length
- Steel or s/steel bar 1075 mm long
- Bar to be cut
- 97 mm projection
- HO function in option
- Micro switch version in option



Panic Exit Device Characteristics of PED/GV

Characteristics of PED/GV:

- Set of rods, rod covers and vertical latches
- To fit modular cross bar
- For 2 (top & bottom) vertical locking points installation
- For one or double leaf door
- For doors up to 2350 mm high in standard
- For doors up to 3200 mm high in option
- Steel pulman latches

CE	ASSA ABLOY EAST EUROPE Dobroměřská 1418/12 102 00 Praha 10 Czech Republic	12
	1239 / 0814901	3 7 6 10 / 6 1 3 2 2 A A
UNE-EN 1125:2009		



Panic Exit Device - Cross Bar

Panic Exit Device PED 200 + PED/GV

Ordering details

Model no.	Part no.	Type	Description
PED 200/--/ GG	MNAT101M02SGGAA	Cross bar	Central locking point PED with steel latch and dead latch, 1200 mm wide door, grey support and bar
PED 200/--/ NR	MNAT101M02SNRAA	Cross bar	Central locking point PED with steel latch and dead latch, 1200 mm wide door, black support and red bar
PED 200/--/SI	MNAT101M02SSIAA	Cross bar	Central locking point PED with steel latch and dead latch, 1200 mm wide door, s/steel effect support and s/steel bar
PED 200/--/II	MNAT101M02SIIAA	Cross bar	Central locking point PED with steel latch and dead latch, 1200 mm wide door, s/steel support and bar
PED 200/HO/ GG	MNAT111M02SGGAA	Cross bar	Central locking point PED with steel latch and dead latch, 1200 mm wide door, grey support and bar - HO function
PED 200/HO/ NR	MNAT111M02SNRAA	Cross bar	Central locking point PED with steel latch and dead latch, 1200 mm wide door, black support and red bar - HO function
PED 200/HO/ SI	MNAT111M02SSIAA	Cross bar	Central locking point PED with steel latch and dead latch, 1200 mm wide door, s/steel effect support and s/steel bar - HO function
PED 200/ HO/II	MNAT111M02SIIAA	Cross bar	Central locking point PED with steel latch and dead latch, 1200 mm wide door, s/steel support and bar - HO function
PED/GV/G	KITMNC1S3SVFG	Vertical KIT	Modular KIT for two vertical locking points and rod cover PED with steel latch grey support and vertical rod cover
PED/GV/N	KITMNC1S3SVFN	Vertical KIT	Modular KIT for two vertical locking points and rod cover PED with steel latch black support and vertical rod cover
PED/GV/S	KITMNC1S3SVFS	Vertical KIT	Modular KIT for two vertical locking points and rod cover PED with steel latch satin support and vertical rod cover

Panic Exit Trim Specifications

Outside Device	Blind Plate	Modular Lever Handle
No outside opening	•	
Free passing door		•
Cylinder locking - knob / lever handle opening		•

Panic Exit Device - Cross Bar

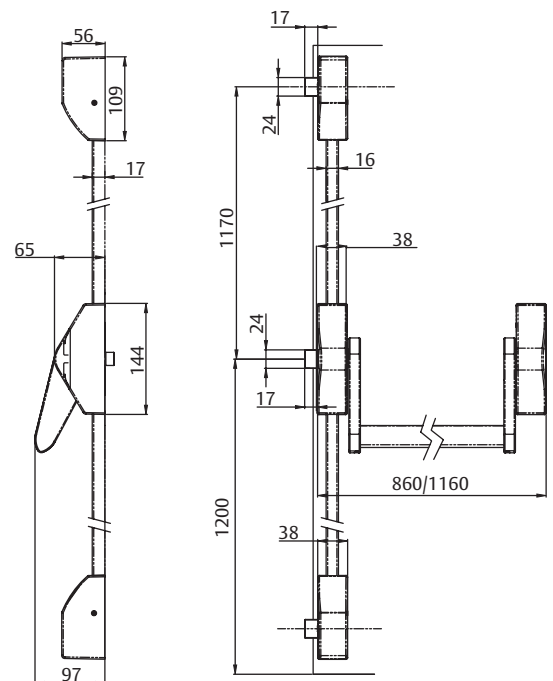
**Panic Exit Device
PED 200 + PED/GL
Cross Bar - Vertical
Device
Lateral locking
points**

ASSA ABLOY PED 200 + PED/GV:

- Set of PED composed of Modular Cross Bar and kit for 2/3 lateral locking points

Characteristics of PED 200 :

- Modular cross bar type
- For Fire and Smoke applications
- High durability 2,00,000 cycles
- One central locking point
- For one or double leaf door up to 200 kg
- For all types of door
- For doors up to 1200 mm width in standard
- For doors up to 1400 mm width in option
- Dead latch in standard
- Steel swing latch
- Zinc alloy or s/steel cover 38 mm length
- Steel or s/steel bar 1075 mm long
- Bar to be cut
- 97 mm projection
- HO function in option
- Micro switch version in option



**Panic Exit Device
Characteristics of
PED/GL**

Characteristics of PED/GL:

- Set of rods, rod covers and lateral latches
- To fit modular cross bar
- For 2 lateral locking points installation
- For one or double leaf door
- For doors up to 2350 mm high in standard
- For doors up to 3200 mm high in option
- Steel pulman latches
- Dead latches in standard

CE	ASSA ABLOY EAST EUROPE Dolnoměcholupská 1418/12 102 00 Praha 10 Czech Republic	12
	1239 / 0814901	3 7 6 ⁰ / ₈ 1 3 2 2 A A
UNE-EN 1125:2009		



Panic Exit Device - Cross Bar

Panic Exit Device PED 200 + PED/GL

Ordering details

Model no.	Part no.	Type	Description
PED 200/--/ GG	MNAT101M02SGGAA	Cross bar	Central locking point PED with steel latch and dead latch, 1200 mm wide door, silver support and bar
PED 200/--/ NR	MNAT101M02SNRAA	Cross bar	Central locking point PED with steel latch and dead latch, 1200 mm wide door, black support and red bar
PED 200/--/SI	MNAT101M02SSIAA	Cross bar	Central locking point PED with steel latch and dead latch, 1200 mm wide door, s/steel effect support and s/steel bar
PED 200/--/II	MNAT101M02SIIAA	Cross bar	Central locking point PED with steel latch and dead latch, 1200 mm wide door, s/steel support and bar
PED 200/HO/ GG	MNAT111M02SGGAA	Cross bar	Central locking point PED with steel latch and dead latch, 1200 mm wide door, silver support and bar - HO function
PED 200/HO/ NR	MNAT111M02SNRAA	Cross bar	Central locking point PED with steel latch and dead latch, 1200 mm wide door, black support and red bar - HO function
PED 200/HO/ SI	MNAT111M02SSIAA	Cross bar	Central locking point PED with steel latch and dead latch, 1200 mm wide door, s/steel effect support and s/steel bar - HO function
PED 200/ HO/II	MNAT111M02SIIAA	Cross bar	Central locking point PED with steel latch and dead latch, 1200 mm wide door, s/steel support and bar - HO function
PED/GL/G	KITMNC1S3SLFG	lateral KIT	Modular KIT for two lateral locking points and rod cover PED with steel latch silver support and vertical rod cover
PED/GL/N	KITMNC1S3SLFN	lateral KIT	Modular KIT for two lateral locking points and rod cover PED with steel latch black support and vertical rod cover
PED/GL/S	KITMNC1S3SLFS	lateral KIT	Modular KIT for two lateral locking points and rod cover PED with steel latch satin support and vertical rod cover

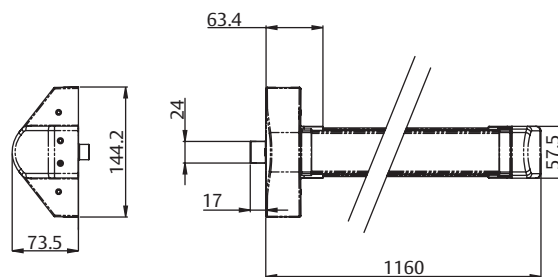
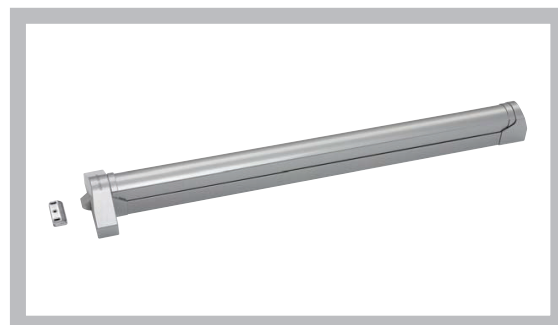
Panic Exit Trim Specifications

Outside Device	Blind Plate	Modular Lever Handle
No outside opening	•	
Free passing door		•
Cylinder locking - knob / lever handle opening		•

**Panic Exit Device
PED 300
Push Bar - Rim
Device**

ASSA ABLOY PED 300:

- Panic exit device with central locking point - RIM



**Panic Exit Device
Characteristics of
PED 300**

Characteristics of PED 300 :

- Modular push bar type
- For fire and smoke applications
- High durability 2,00,000 cycles
- One central locking point
- For one or double leaf door up to 200 kg
- For all types of door
- For doors up to 1200 mm width in standard
- For doors up to 1400 mm width in option
- Steel pulman latch in standard
- Dead latch in standard
- Steel or zinc alloy swing latch
- Zinc alloy cover 38 mm width
- Aluminium touch bar 1046 mm long
- Bar to be cut
- 73 mm projection
- HO function in option
- Micro switch version in option



Panic Exit Device - Push Bar

Panic Exit Device PED 300

Ordering details

Model no.	Part no.	Type	Description
PED 300/--/ GG	MNBT101M02SGGAA	Push bar	Central locking point PED with steel latch and dead latch, 1200 mm wide door, silver support and bar
PED 300/--/ NR	MNBT101M02SNRAA	Push bar	Central locking point PED with steel latch and dead latch, 1200 mm wide door, black support and red bar
PED 300/--/ SA	MNBT101M02SSAAA	Push bar	Central locking point PED with steel latch and dead latch, 1200 mm wide door, s/steel effect support and s/steel effect bar
PED 300/HO/ GG	MNBT111M02SGGAA	Push bar	Central locking point PED with steel latch and dead latch, 1200 mm wide door, Silver support and bar - HO function
PED 300/HO/ NR	MNBT111M02SNRAA	Push bar	Central locking point PED with steel latch and dead latch, 1200 mm wide door, black support and red bar - HO function
PED 300/HO/ SA	MNBT111M02SSAAA	Push bar	Central locking point PED with steel latch and dead latch, 1200 mm wide door, s/steel effect support and s/steel bar - HO function

Panic Exit Trim Specifications

Outside Device	Blind Plate	Modular Lever Handle
No outside opening	•	
Free passing door		•
Cylinder looking - knob / lever handle opening		•
Cylinder locking - key opening		•

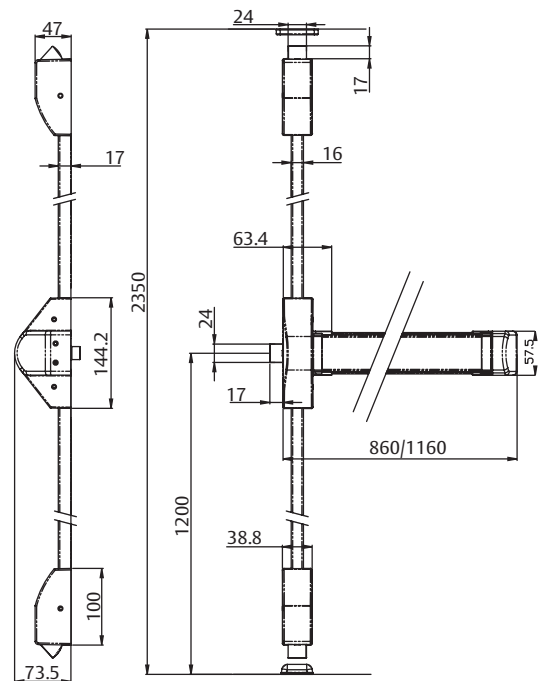
**Panic Exit Device
PED 300+PED/GV
Push Bar - Vertical
Device
Vertical locking
points**

ASSA ABLOY PED 300:

- Set of 2/3 locking points PED composed of Modular Push Bar and kit for 2 vertical locking points

Characteristics of PED 300:

- Modular push bar type
- For fire and smoke applications
- High durability 2,00,000 cycles
- One central locking point
- For one or double leaf door up to 200 kg
- For all types of door
- For doors up to 1200 mm width in standard
- For doors up to 1400 mm width in option
- Steel pulman latch in standard
- Dead latch in standard
- Steel or zinc alloy swing latch
- Zinc alloy cover 38 mm width
- Aluminium touch bar 1046 mm long
- Bar to be cut
- 73 mm projection
- HO function in option
- Micro switch version in option



**Panic Exit Device
Characteristics of
PED 300+PED/GV**

Characteristics of PED 300+PED/GV:

- Set of rods, rod covers and vertical latches
- To fit modular cross bar
- For 2 (top & bottom) vertical locking points installation
- For one or double leaf door
- For doors up to 2350 mm high in standard
- For doors up to 3200 mm high in option
- Steel pulman latches

CE	ASSA ABLOY EAST EUROPE Dolnoměcholupská 1418/12 102 00 Praha 10 Czech Republic	12
	1239 / 0814901	3 7 6 ⁰ / ₆ 1 3 2 2 B A
UNE-EN 1125:2009		



Panic Exit Device - Push Bar

Panic Exit Device PED 300+PED/GV

Ordering details

Model no.	Part no.	Type	Description
PED 300/--/ GG	MNBT101M02SGGAA	Push bar	Central locking point PED with steel latch and dead latch, 1200 mm wide door, silver support and bar
PED 300/--/ NR	MNBT101M02SNRAA	Push bar	Central locking point PED with steel latch and dead latch, 1200 mm wide door, black support and red bar
PED 300/--/SA	MNBT101M02SSAAA	Push bar	Central locking point PED with steel latch and dead latch, 1200 mm wide door, s/steel effect support and s/steel bar
PED 300/HO/ GG	MNBT111M02SGGAA	Push bar	Central locking point PED with steel latch and dead latch, 1200 mm wide door, silver support and bar - HO function
PED 300/HO/ NR	MNBT111M02SNRAA	Push bar	Central locking point PED with steel latch and dead latch, 1200 mm wide door, black support and red bar - HO function
PED 300/HO/ SA	MNBT111M02SSAAA	Push bar	Central locking point PED with steel latch and dead latch, 1200 mm wide door, s/steel effect support and s/steel bar - HO function
PED/GV/G	KITMNC1S3SVFG	Vertical KIT	Modular KIT for two vertical locking points and rod cover PED with steel latch silver support and vertical rod cover
PED/GV/N	KITMNC1S3SVFN	Vertical KIT	Modular KIT for two vertical locking points and rod cover PED with steel latch black support and vertical rod cover
PED/GV/S	KITMNC1S3SVFS	Vertical KIT	Modular KIT for two vertical locking points and rod cover PED with steel latch satin support and vertical rod cover

Panic Exit Trim Specifications

Outside Device	Blind Plate	Modular Lever Handle
No outside opening	•	
Free passing door		•
Cylinder locking - knob / lever handle opening		•

**Panic Exit Device
PED 300+PED/GL
Push Bar - Lateral
locking points**

ASSA ABLOY PED 300:

- Set of PED composed of Modular Push Bar and kit for 2/3 lateral locking points

Characteristics of PED 300:

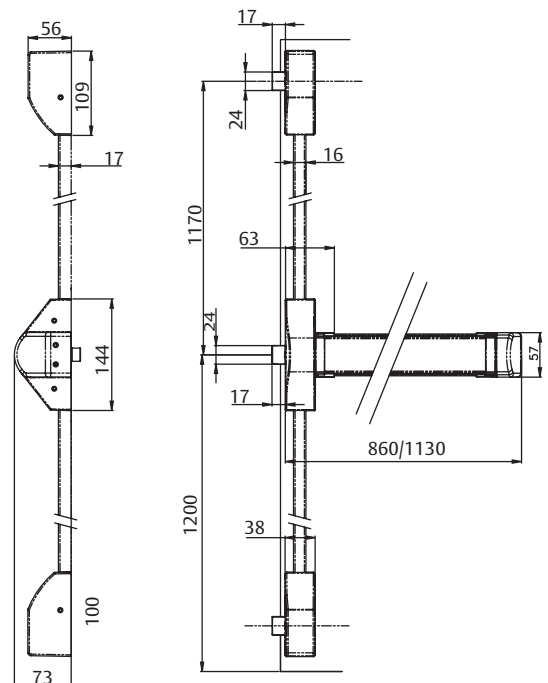
- Modular push bar type
- For fire and smoke applications
- High durability 2,00,000 cycles
- One central locking point
- For one or double leaf door up to 200 kg
- For all types of door
- For doors up to 1200 mm width in standard
- For doors up to 1400 mm width in option
- Steel pulman latch in standard
- Dead latch in standard
- Steel or zinc alloy swing latch
- Zinc alloy cover 38 mm width
- Aluminium touch bar 1046 mm long
- Bar to be cut
- 73 mm projection
- HO function in option
- Micro switch version in option



**Panic Exit Device
Characteristics of
PED 300+PED/GL**

Characteristics of PED 300+PED/GL:

- Set of rods, rod covers and lateral latches
- To fit modular cross bar
- For 2 lateral locking points installation
- For one or double leaf door
- For doors up to 2350 mm high in standard
- For doors up to 3200 mm high in option
- Steel pulman latches
- Dead latches in standard



CE	ASSA ABLOY EAST EUROPE Dolnoměcholupská 1418/12 102 00 Praha 10 Czech Republic	12
	1239 / 0814901	3 7 6 0 / B 1 3 2 2 B A
UNE-EN 1125:2009		



Panic Exit Device - Push Bar

**Panic Exit Device
PED 300 + PED/GL**

Ordering details

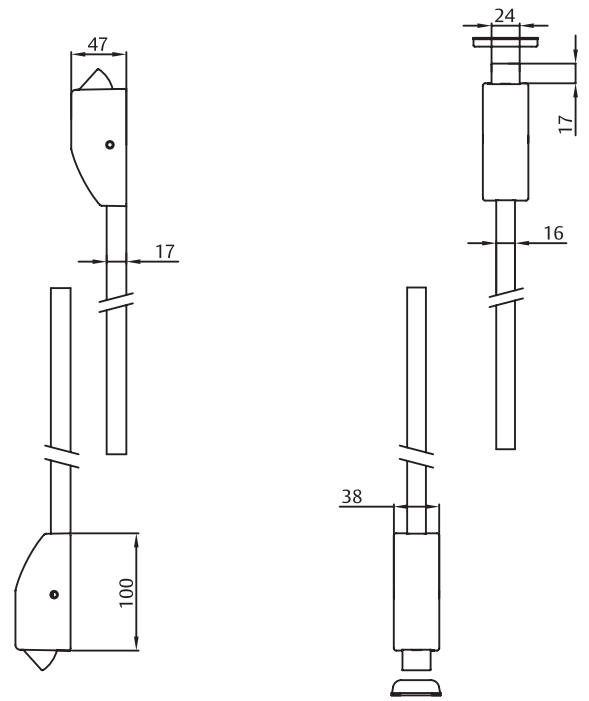
<i>Model no.</i>	<i>Part no.</i>	<i>Type</i>	<i>Description</i>
PED 300/--/ GG	MNBT101M02SGGAA	Push bar	Central locking point PED with steel latch and dead latch, 1200 mm wide door, silver support and bar
PED 300/--/ NR	MNBT101M02SNRAA	Push bar	Central locking point PED with steel latch and dead latch, 1200 mm wide door, black support and red bar
PED 300/--/SA	MNBT101M02SSAAA	Push bar	Central locking point PED with steel latch and dead latch, 1200 mm wide door, s/steel effect support and s/steel bar
PED 300/HO/ GG	MNBT111M02SGGAA	Push bar	Central locking point PED with steel latch and dead latch, 1200 mm wide door, silver support and bar - HO function
PED 300/HO/ NR	MNBT111M02SNRAA	Push bar	Central locking point PED with steel latch and dead latch, 1200 mm wide door, black support and red bar - HO function
PED 300/HO/ SA	MNBT111M02SSAAA	Push bar	Central locking point PED with steel latch and dead latch, 1200 mm wide door, s/steel effect support and s/steel bar - HO function
PED/GL/G	KITMNCF1S3SLFG	lateral KIT	Modular KIT for two/three lateral locking points and rod cover PED with steel latch silver support and vertical rod cover
PED/GL/N	KITMNCF1S3SLFN	lateral KIT	Modular KIT for two/three lateral locking points and rod cover PED with steel latch black support and vertical rod cover
PED/GL/S	KITMNCF1S3SLFS	lateral KIT	Modular KIT for two/three lateral locking points and rod cover PED with steel latch satin support and vertical rod cover

**Panic Exit Trim
Specifications**

<i>Outside Device</i>	<i>Blind Plate</i>	<i>Modular Lever Handle</i>
No outside opening	•	
Free passing door		•
Cylinder locking - knob / lever handle opening		•

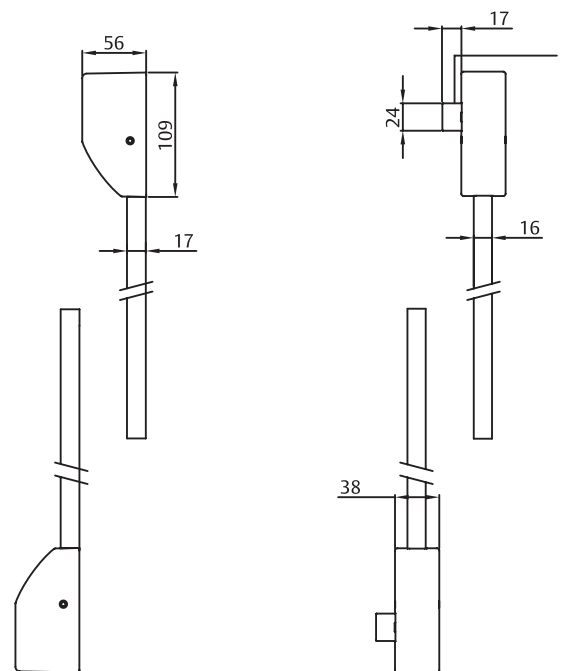
**Panic Exit Devices
Rim version
PED/GV**

Vertical rod device length: 1100 mm
PED/GV



**Panic Exit Devices
Rim version
PED/GL**

Lateral rod device length: 1100 mm
PED/GL



**Accessories
Micro switch**

Part no.	Description
MISW-A	Optional Micro switch to be installed at Factory for PED200
MISW-A	Optional Micro switch to be installed at Factory for PED300
KITMICMNA	1 Installation Kit for Micro switch for PED200
KITMICMNB	1 Installation Kit for Micro switch for PED300

Panic Exit Device - Exit Trim

Panic Exit Trim OT 200

ASSA ABLOY OT 200:

Finish:

- PL: silver
- NE: black
- SA: s/steel effect

Specifications:

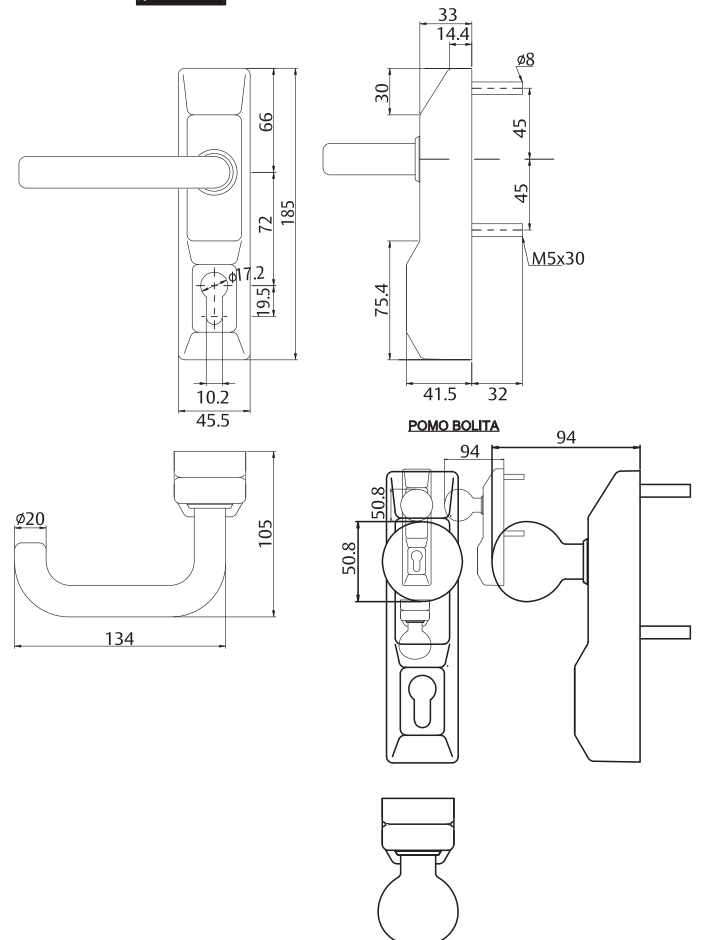
- Outside trims rim type
- Same design in various options
- With or without half euro profile cylinder
- Standards spindle suitable for doors up to 50 mm thickness



Panic Exit Trim Accessories

Accessories:

- Half euro profile cylinder 30x10 mm



Panic Exit Device - OT 200

ASSA ABLOY

Panic Exit Trim OT 200

Ordering details

Model no.	Part no.	Description
PED/A/210/NE	MMPS300NEAA	Modular Handle with no Cylinder Black including 8mm Square Spindle
PED/A/210/PL	MMPS300PLAA	Modular Handle with no Cylinder Silver Including 8mm Square Spindle Including 8mm Square Spindle
PED/A/210/SA	MMPS300SAAA	Modular Handle no Cylinder Satin including 8mm Square Spindle Including 8mm Square Spindle
PED/A/220/NE	MMPS25CNEAA	Modular Handle with Cylinder Hole Black including 8mm Square Spindle
PED/A/220/PL	MMPS25CPLAA	Modular Handle with Cylinder Hole Silver including 8mm Square Spindle
PED/A/220/SA	MMPS25CSAAA	Modular Handle with Cylinder Hole Satin including 8mm Square Spindle
PED/A/230/NE	MMPP25CNEAA	Modular Swing Pull Knob with Cylinder Hole Black including 8mm Square Spindle
PED/A/230/PL	MMPP25CPLAA	Modular Swing Pull Knob with Cylinder Hole Silver including 8mm Square Spindle
PED/A/230/SA	MMPP25CSAAA	Modular Swing Pull Knob with Cylinder Hole Satin including 8mm Square Spindle

Panic Exit Trim Glass door kit

Ordering details

Model no.	Part no.	Type	Description
PED/A/GKS1/GG	MNATK1CRIMMTGG	Cross Bar - Glass Kit	Installation Kit for Glass Doors, for Ped Single Point, Silver
PED/A/GKS1/NE	MNATK1CRIMMTNE	Cross Bar - Glass Kit	Installation Kit for Glass Doors, for Ped Single Point, Black
PED/A/GKS0/GG	MNATK1CRIPCGG	Cross Bar - Glass Kit	Installation Kit for Glass Doors, for Ped Single Point + Blind Escutcheon, Silver
PED/A/GKS0/NE	MNATK1CRIPCNE	Cross Bar - Glass Kit	Installation Kit for Glass Doors, for Ped Single Point + Blind Escutcheon, Black
PED/B/GKS1/GG	MNBTK1CRIMMTGG	Push Bar Glass Kit	Installation Kit for Glass Doors, for Ped Single Point, Silver
PED/B/GKS1/NE	MNBTK1CRIMMTNE	Push Bar Glass Kit	Installation Kit for Glass Doors, for Ped Single Point, Black
PED/B/GKS0/GG	MNBTK1CRIPCGG	Push Bar Glass Kit	Installation Kit for Glass Doors, for Ped Single Point + Blind Escutcheon, Silver
PED/B/GKS0/NE	MNBTK1CRIPCNE	Push Bar Glass Kit	Installation Kit for Glass Doors, for Ped Single Point + Blind Escutcheon, Black
PED/A/GKV1/GG	MNK3CRIGG	Cross Bar - Glass Kit	Installation Kit for Glass Doors, for Ped 2/3 Points, Silver
PED/A/GKS1/NE	MNK3CRINE	Cross Bar - Glass Kit	Installation Kit for Glass Doors, for Ped 2/3 Points, Black