

## STERLING 800

For bottom rolling timber or metal doors. Max 800kg each leaf.

### APPLICATION

- For timber or metal doors on exterior applications
- Designed for commercial or industrial straight sliding partitions
- Suited for where the supporting structure or lintel is insufficient for the weight of the door or where headroom is limited
- To cover any width of opening, any number of doors can be used on single or multiple lines
- The top guide channel can be soffit or face fixed
- The bottom rail can be recessed allowing traffic to pass over the rail without obstruction
- Where fitted externally, a canopy is recommended to protect the top guide channel, brackets and top guide rollers

### DOOR SPECIFICATION

**Rail System** Sterling 800

For Individual Door Leaves:

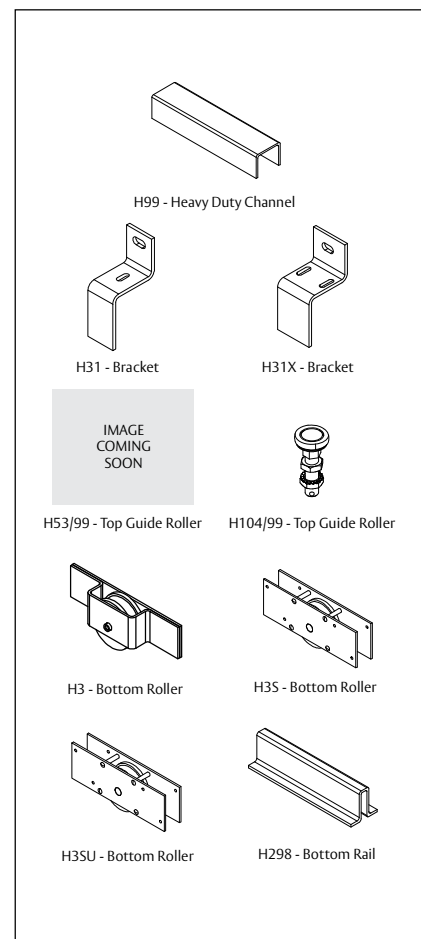
Max Door Weight	800kg
Min Door Thickness	54-63mm
Max Door Height	5200mm

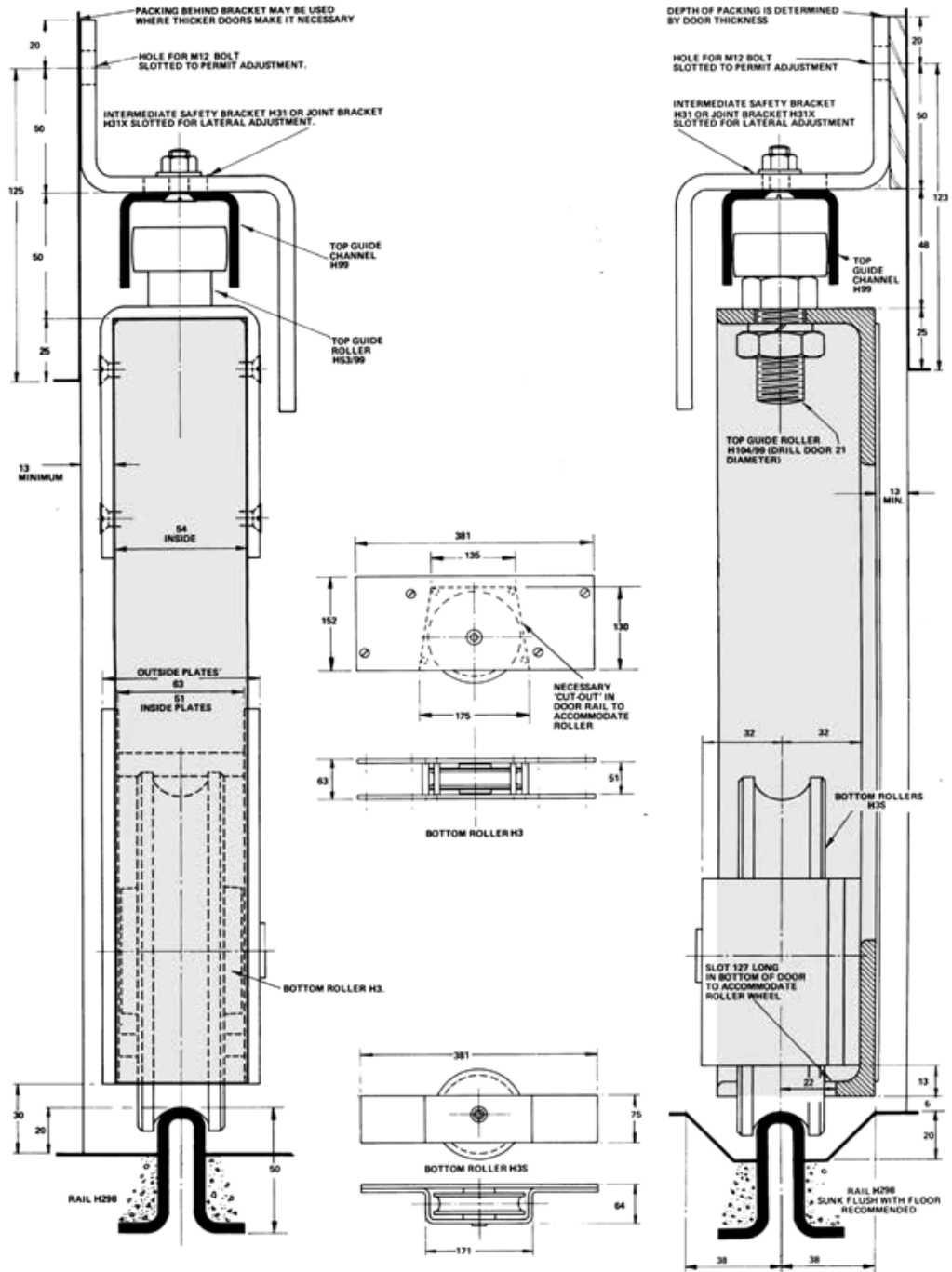
Doors can be constructed with a deep bottom section of minimum depth of 230mm. For ease of operation, it is recommended the door width be at least 50% of the door height.

### HARDWARE SPECIFICATION

<b>Top Guide Channel</b>	<b>H99</b>	Heavy duty galvanised steel (2000, 2500 & 3000mm lengths)
<b>Top Guide Brackets</b>	<b>H31</b>	For single line - face fixed pressed steel
	<b>H31X</b>	Single line jointing - face fixed pressed steel
	<b>H35</b>	For double line - face fixed pressed steel
	<b>H35X</b>	Double line jointing - face fixed pressed steel Fix at 900mm centres (max.)
<b>Top Guide Rollers (2 per door)</b>	<b>H53/99</b>	Timber doors in industrial applications
	<b>H104/99</b>	Metal doors in industrial applications
<b>Bottom Rollers (2 per door)</b>	<b>H3</b>	Timber doors - zinc plated
	<b>H3S</b>	Metal doors - zinc plated
	<b>H3SU</b>	Metal doors (bolt on) - zinc plated
<b>Bottom Rail</b>	<b>H298</b>	Galvanised steel (2000, 2500 & 3000mm lengths)
<b>Accessories</b>		
Flush Pull	<b>H414</b>	Diecast aluminium, 133 x 60mm
Bow Handle	<b>H463</b>	Zinc plated cast iron, 159 x 46mm
Flushbolt	<b>H78</b>	Zinc plated steel, 127 x 45mm
Bolts	<b>H994</b>	Surface bolt, 380mm, zinc plated steel
	<b>H994S</b>	Surface bolt locking, 380mm, zinc plated steel

IMAGE  
COMING  
SOON





ASSA ABLOY New Zealand Ltd. PO Box 100407, North Shore, Auckland 0745 • 6 Armstrong Road, Albany, Auckland 0632, New Zealand  
 Within New Zealand: Tel 09 415 8031 Fax 0800 478 297 www.assaabloy.co.nz • Outside New Zealand: Tel +64 9 921 7630 Fax +64 9 415 7222 www.assaabloy.co.nz