

# Openings Studio<sup>TM</sup>

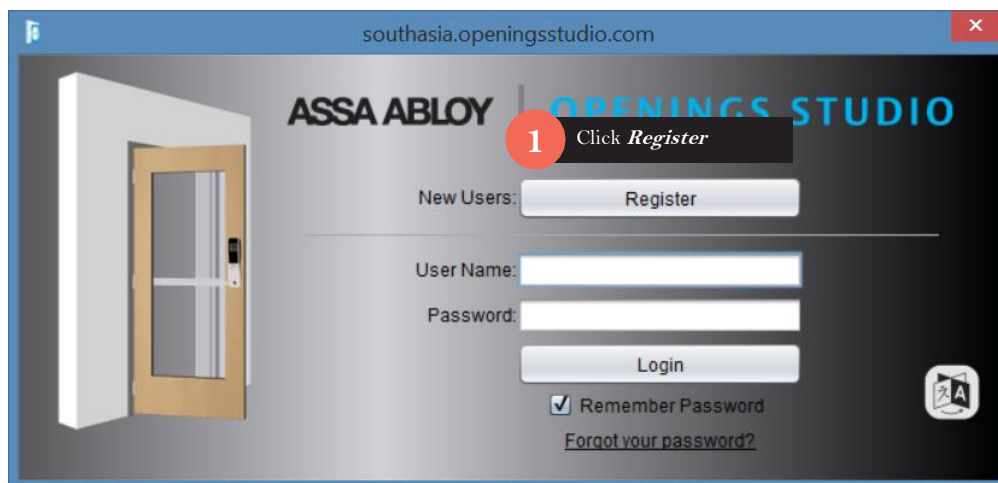
## Architect User guide

**ASSA ABLOY**

The global leader in  
door opening solutions

# Signing up for an account

After successfully installing AAOS open the application and click on Register to open the registration page. Fill in all the required data including the Activation code to create the account. If you do not possess a valid activation code, kindly contact your local AAOS consultant. Once you have successfully signed up you will return to the Sign In interface for which your user information is automatically entered.



Register for Openings Studio

ASSA ABLOY OPENINGS STUDIO

\* First Name:

\* Last Name:

\* Company Name:

\* Email:

\* Confirm E-Mail:

\* Password:

\* Confirm Password:

\* Activation Code:

3 Enter Activation Code

End User License Agreement (EULA)

industry by licensed architects, engineers, contractors, product suppliers, and facility owners, and should not be used in lieu of advice from licensed professionals.

Copyright © 2017, ASSA ABLOY. All rights reserved. Reproduction in whole or in part without the express written permission of ASSA ABLOY is prohibited.

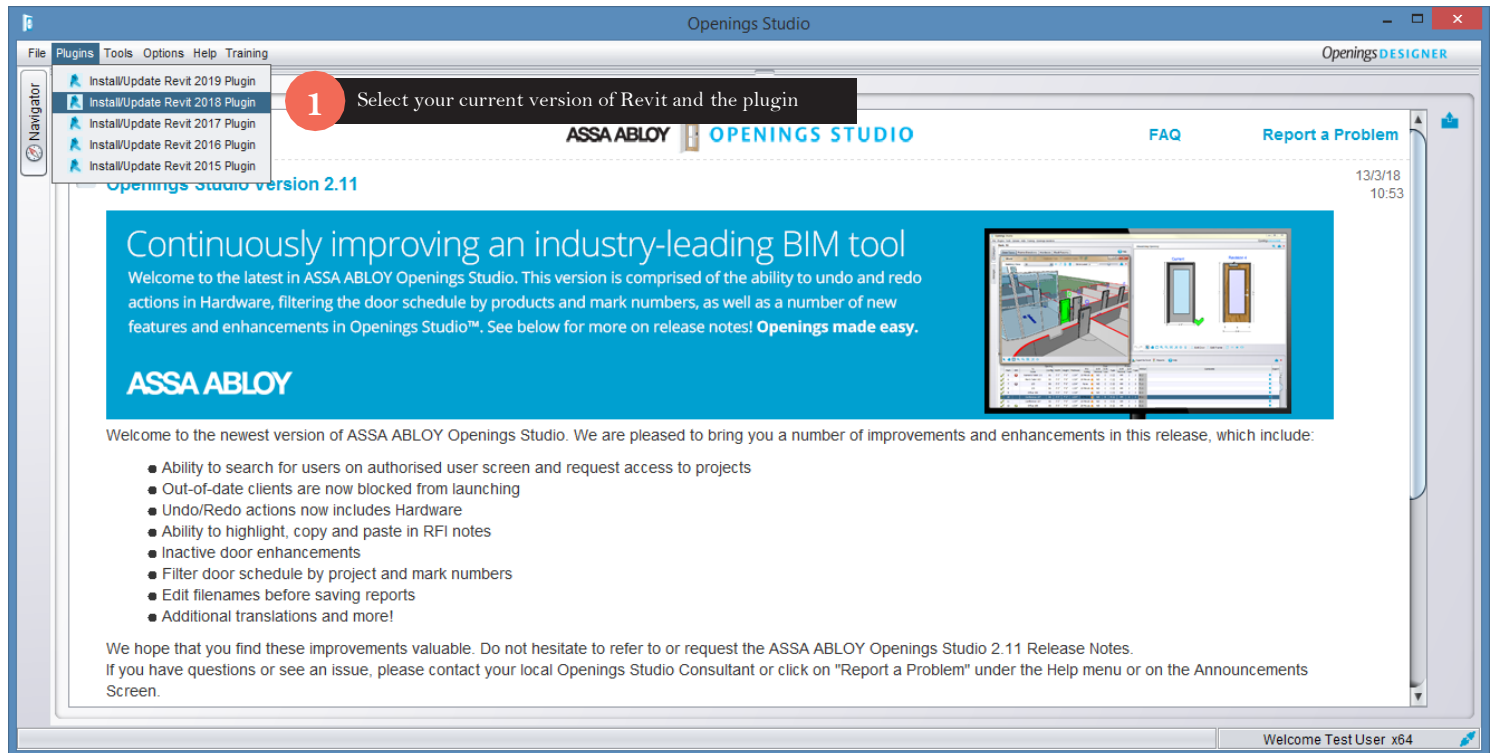
☐ \* I accept the terms of the End User License Agreement

☐ \* I have read and accept the terms of the [privacy policy](#)

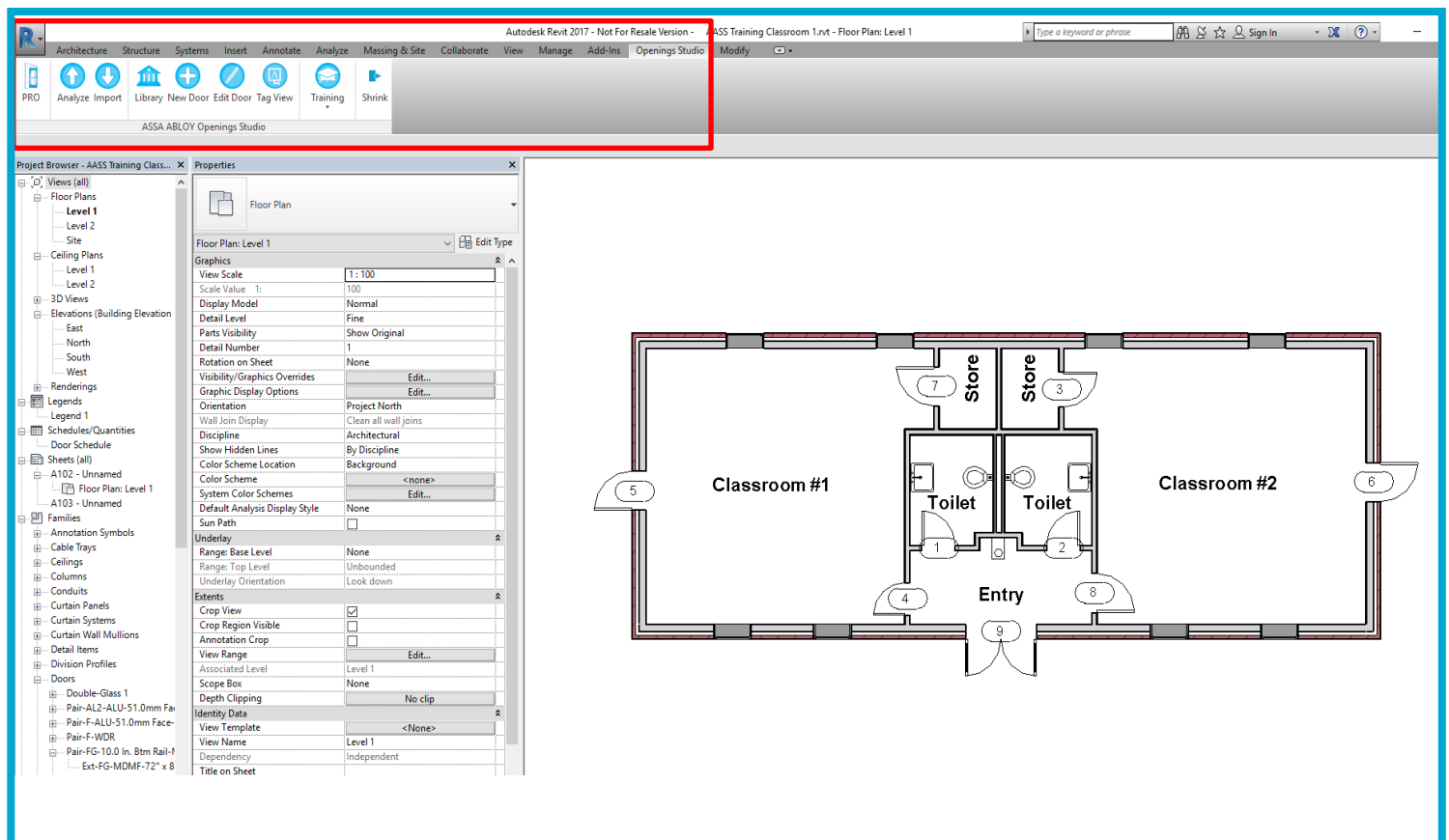
Submit Registration

# Installing the AAOS Plugin

The user will see the below screen when logging in to the system. Select your currently installed version of Revit. The installation will only take a few seconds and you will be informed by an Installation Successful prompt once finished. You are now ready to use the plugin!

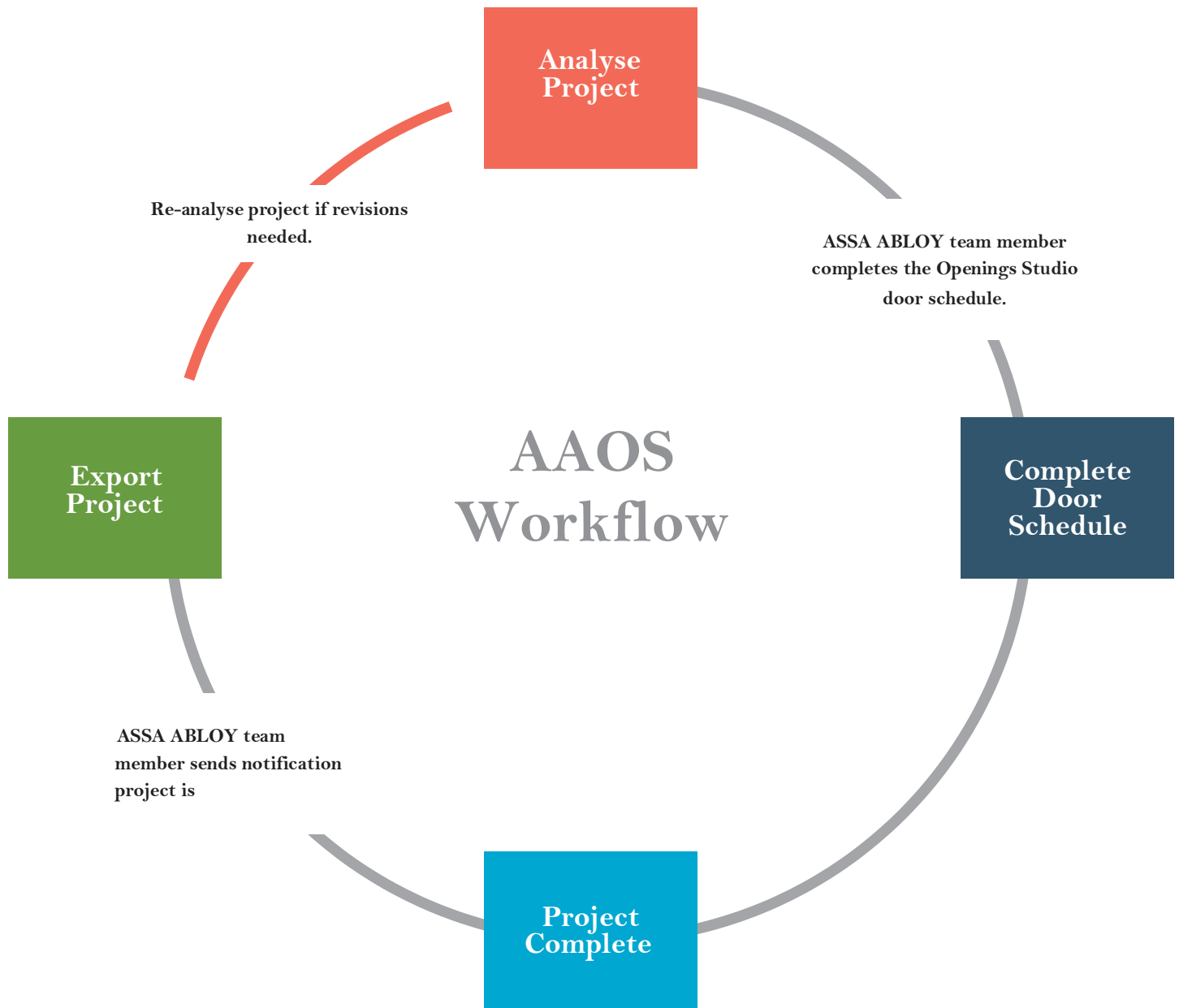


When installed successfully you can now access the Plugin in Revit Ribbon above



# DOOR SCHEDULING, MADE EASIER

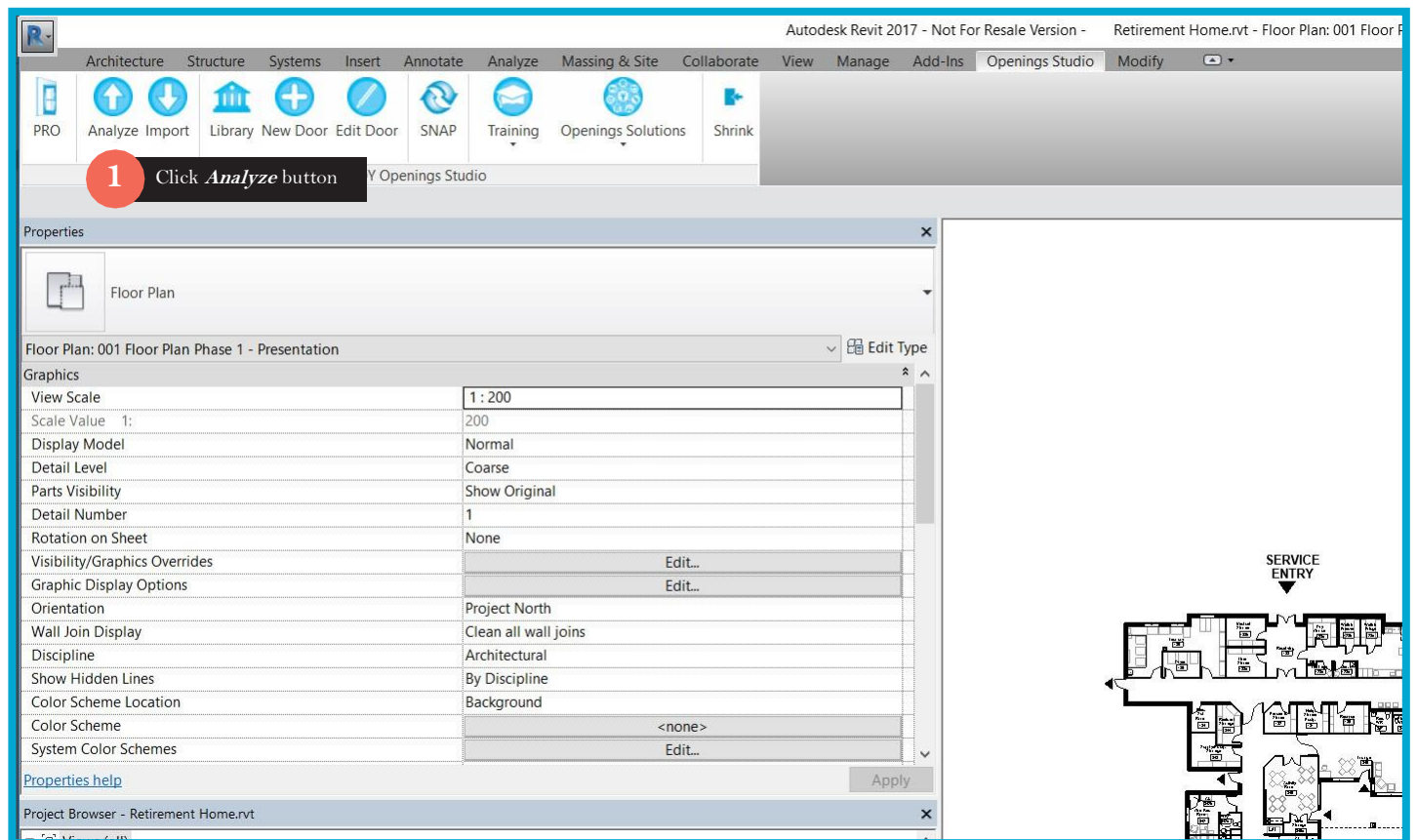
AAOS creates, visualises, and modifies 3D door, frame, and hardware models used throughout architectural design and construction projects. When specified in the BIM project model, these data rich openings become the basis of design. Let's get started analysing your project!





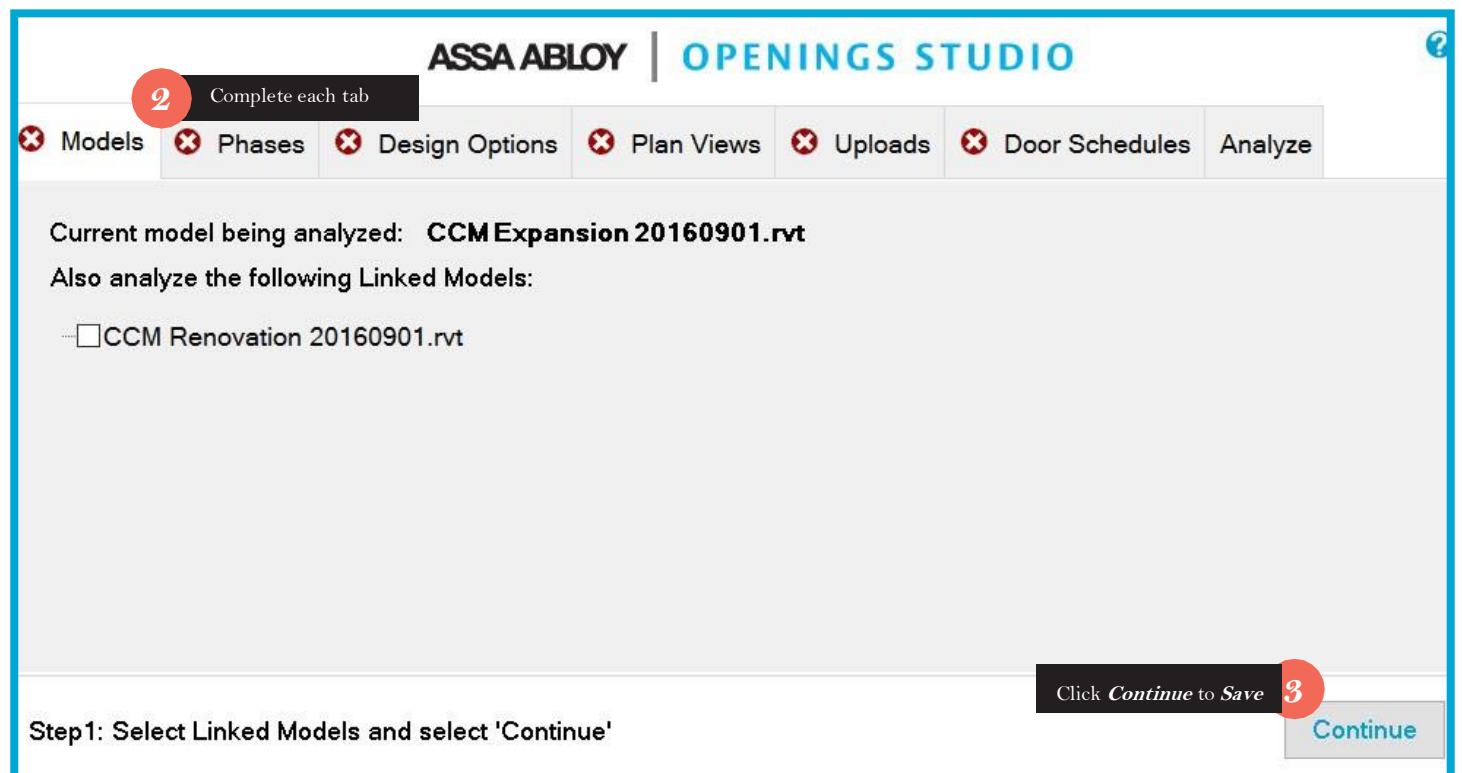
# Analyse a Project

Open a Revit project and click the “*Openings Studio*” tab on the Revit ribbon.  
Click the “*Analyze*” button to launch the “*Project Selection*” wizard.



## Project Selection Wizard

Complete each tab of the “*Project Selection*” wizard. After completing each tab, click the “*Continue*” button to save the selections for that tab. If you do not click “*Continue*,” the button will not save the selections for future analysis.



# Models

Include linked models with the current project by selecting any linked models that contain scheduled doors.

ASSA ABLOY | OPENINGS STUDIO

Models

Phases

Design Options

Plan Views

Uploads

Door Schedules

Analyze

Current model being analyzed: CCM Expansion 20160901.rvt

Also analyze the following Linked Models:

☐

CCM Renovation 20160901.rvt

Step1: Select Linked Models and select 'Continue'

Continue

# Phases

Select all phases in the project associated with door openings.  
If available, include the “*New Construction*” phase to capture all new doors and walls in the project.

ASSA ABLOY | OPENINGS STUDIO

Models

Phases

Design Options

Plan Views

Uploads

Door Schedules

Analyze

Select the phases which contain doors requiring work in this project. If walls are part of a different phase, select that phase as well. Only phases in selected models will be analyzed.

☐ Existing

☐ Doors

☐ Walls

☐ Phase 1

☐ Doors

☐ Walls

☐ Phase 2

☐ Doors

☐ Walls

Step 2: Select Model Phases and select 'Continue'

Back

Continue

# Design Options

Select **one design option** for each analysis. The “*Primary*” design option is selected by default.

ASSA ABLOY | OPENINGS STUDIO

Models

Phases

Design Options

Plan Views

Uploads

Door Schedules

Analyze

There are no Design Options in this project.

Step 3: Select Model Design Options and select 'Continue'

BackContinue

# Plan Views

Select all “*Plan Views*” necessary for creating detailed and accurate hardware sets.

ASSA ABLOY | OPENINGS STUDIO

Models

Phases

Design Options

Plan Views

Uploads

Door Schedules

Analyze

Select plan views for all required floor plans

Retirement Home.rvt

000 Level 0

001 Floor Plan 1-100 - Common 1

001 Floor Plan 1-100 - Common 2

001 Floor Plan 1-100 - RHA 2

001 Floor Plan 1to100

001 Floor Plan 1to100 - Common

001 Floor Plan 1to100 - RHA

001 Floor Plan 1to100 - Staff and Service

001 Floor Plan 1to150

001 Floor Plan 1to75

Step 4: Select Project Views and select 'Continue'

BackContinue

Copyright © 2017, ASSA ABLOY. All rights reserved. Reproduction in whole or in part without the express written permission of ASSA ABLOY is prohibited.

ASSA ABLOY

## PDF

Browse to the appropriate folder containing Revit “*Sheets*” and select the necessary Floor Plans, Door Schedules, Door and Frame Elevations, Life & Safety plans, Security plans, etc., to create “hard copy” backups of the Revit floor plans and sheets.

ASSA ABLOY | OPENINGS STUDIO

Models

Phases

Design Options

Plan Views

Uploads

Door Schedules

Analyze

"Recommended files to include:"  
Environment.NewLine "-Floor plans"  
Environment.NewLine "-Door schedules"  
Environment.NewLine "-Door types and frame elevations"  
Environment.NewLine "-Life safety plans"  
Environment.NewLine "-Security plans"

Browse

Selected Files

Delete	Preview	Upload Filepath
--------	---------	-----------------

Step 5: Select Project Uploads and select 'Continue'

Back

Continue

## Door Schedules

Select each relevant door schedule.

ASSA ABLOY | OPENINGS STUDIO

Models

Phases

Design Options

Plan Views

Uploads

Door Schedules

Analyze

Select all door schedules that are included on the door schedule sheets in your analyzed project.

☐ Phase 1 Doors Schedule - Common, Service & Staff

☐ Phase 1 Door Schedule - RHA 2

☐ Phase 1 Door Schedule - RHA 3

☐ Phase 2 Doors Schedule

☐ Phase 2 Existing Doors

☐ Phase 1 Existing Doors

☐ Phase 1 Exterior Doors Schedule

☐ Door Schedule Overhead Doors and Suite Doors

☐ Phase 1 Door Schedule - New Door Count

☐ Phase 1 Door Schedule - Accessory Building

Step 6: Select Door Schedules and select 'Continue'

Back

Continue



Click the **“Start”** button to complete the wizard and analyze the project. Revit will be unresponsive during the analysis period.

ASSA ABLOY | OPENINGS STUDIO

Models

Phases

Design Options

Plan Views

Uploads

Door Schedules

Analyze

**Note:**

Revit will be unresponsive during the analyze.

Click Start to begin the analyze process.

Start Analysis

Step 7: Analyze Revit Project

Back

## Openings Studio

When the analyze process is complete, the Openings Studio interface will display and the project will open automatically. Now our consultants have received the project and will start to work on your and collaborate with you in Openings Studios to finalize the hardware specification for your project.

Mark: 1

Door Types | Frame Elevations | Hardware | Revit Params

Door Type Schedule

Door Type	Arch Type	Instances	Ext	Fire Rating	Arch Material	Material
A	A	10			WD	Wood
A (1)	A	0			Door - Panel	Door - Panel
A (2)	A	1			HM	
A (1) (1)	A	1			WD	
AL2	AL2	0			HM	
B	B	5			WD	
C	C	4			Plain Sliced Red Oak-Plain Sliced Red Oak 100 Clear	
D	D	0			HM	
D (1)	D	1			HM	
F	FG	0			Plain Sliced Red Oak-Plain Sliced Red Oak 100 Clear	
F (1)	AL2	0			HM	

Door & Frame Schedule

Visualizing Opening: 1

Current

Revision 7

Openings Studio - Revision Differences

ASSA ABLOY | OPENINGS STUDIO

You are attempting to create a revision, however your project selections are different from the previous version.

Previous Selections

Phases

Existing

New Construction

Design Options

Option 1 (primary)

Views

1 - First Floor

2 - Second Floor

Schedules

DOOR SCHEDULE

DOOR HARDWARE SCHEDULE

Current Selections

Linked Models

2pt0 Presentation Project 1a.rvt

Phases

New Construction

New Construction

Design Options

Option 1 (primary)

Views

First Floor

1 - First Floor

2 - Second Floor

Removed Selection

Unchanged Selection

Added Selection

Would you like to continue your analysis with your current project selections?

Continue

Reselect

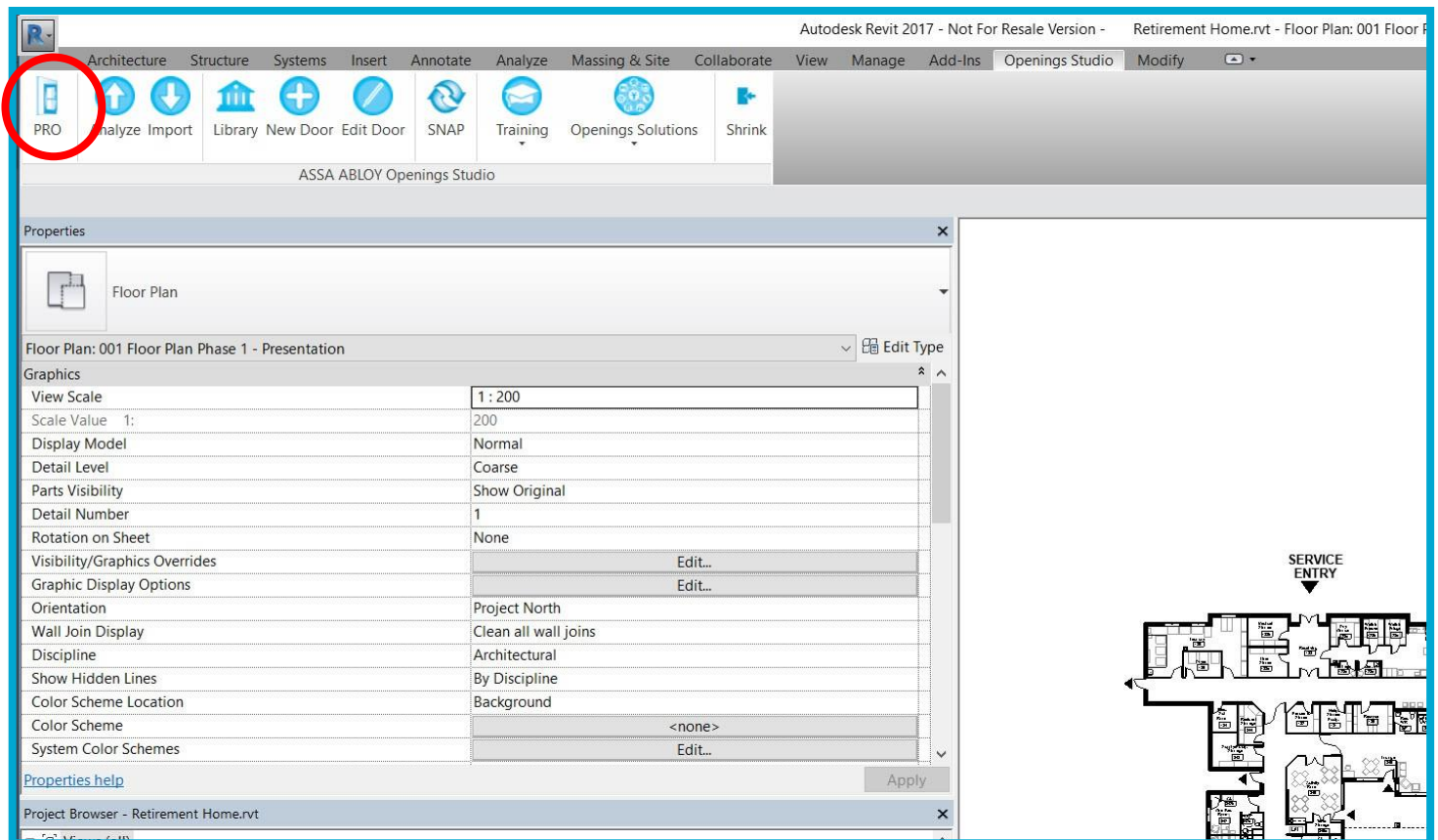
## Project Revisions

For previously analysed projects, Openings Studio will open a **“Revision Differences”** window to compare current selections with previous selections. Click **“Continue”** or **“Reselect,”** as necessary.

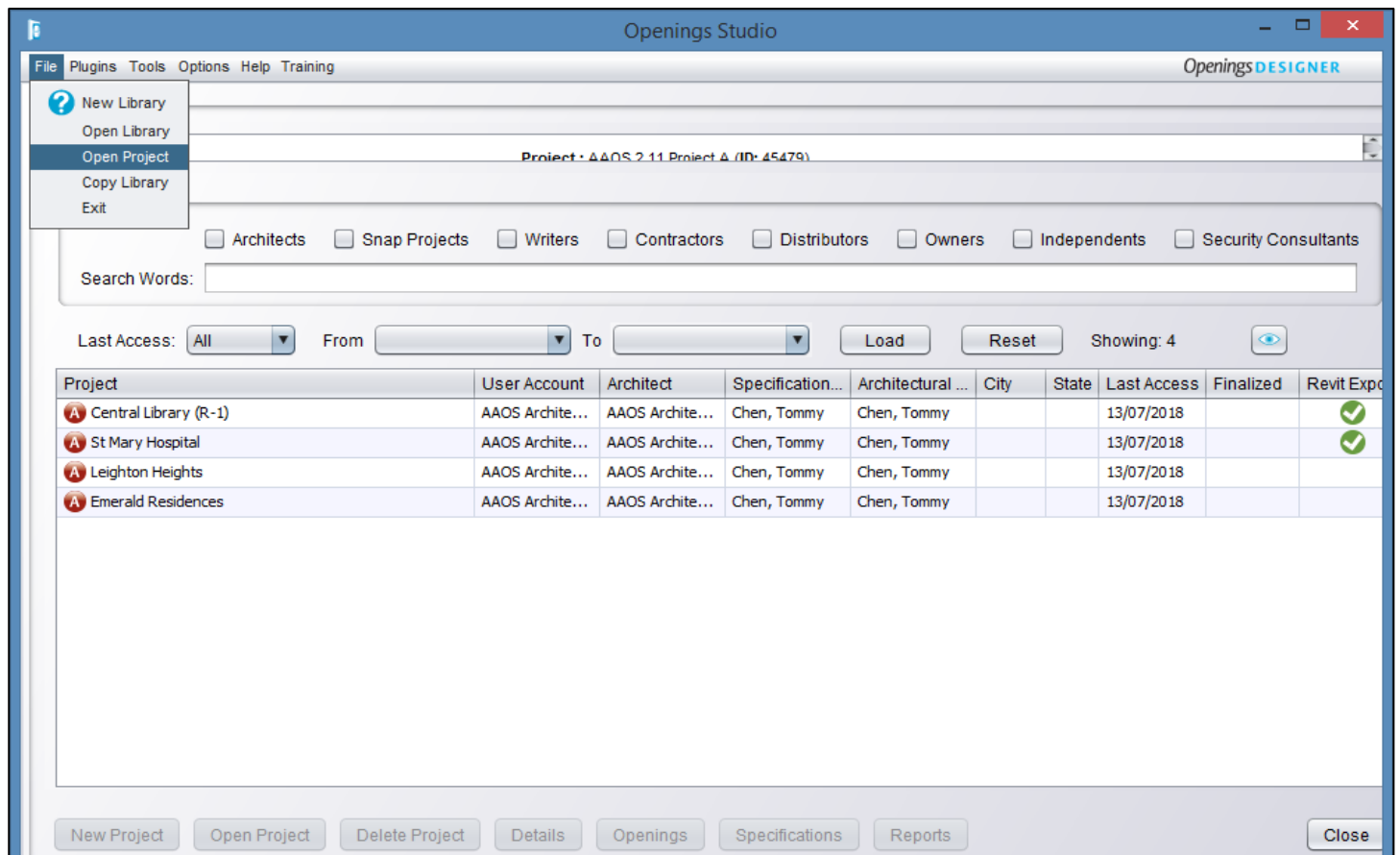
The **Project ID** and **Project Name** from Revit are used to create revisions in Openings Studio. If another project contains an identical Revit **Project ID**, and should not be considered a revision to a previous project, Openings Studio can **“Separate a Project.”** Proceed with the workflow above and an ASSA ABLOY team member will assist you in separating the project in AAOS.

# Collaborate and Accessing Projects

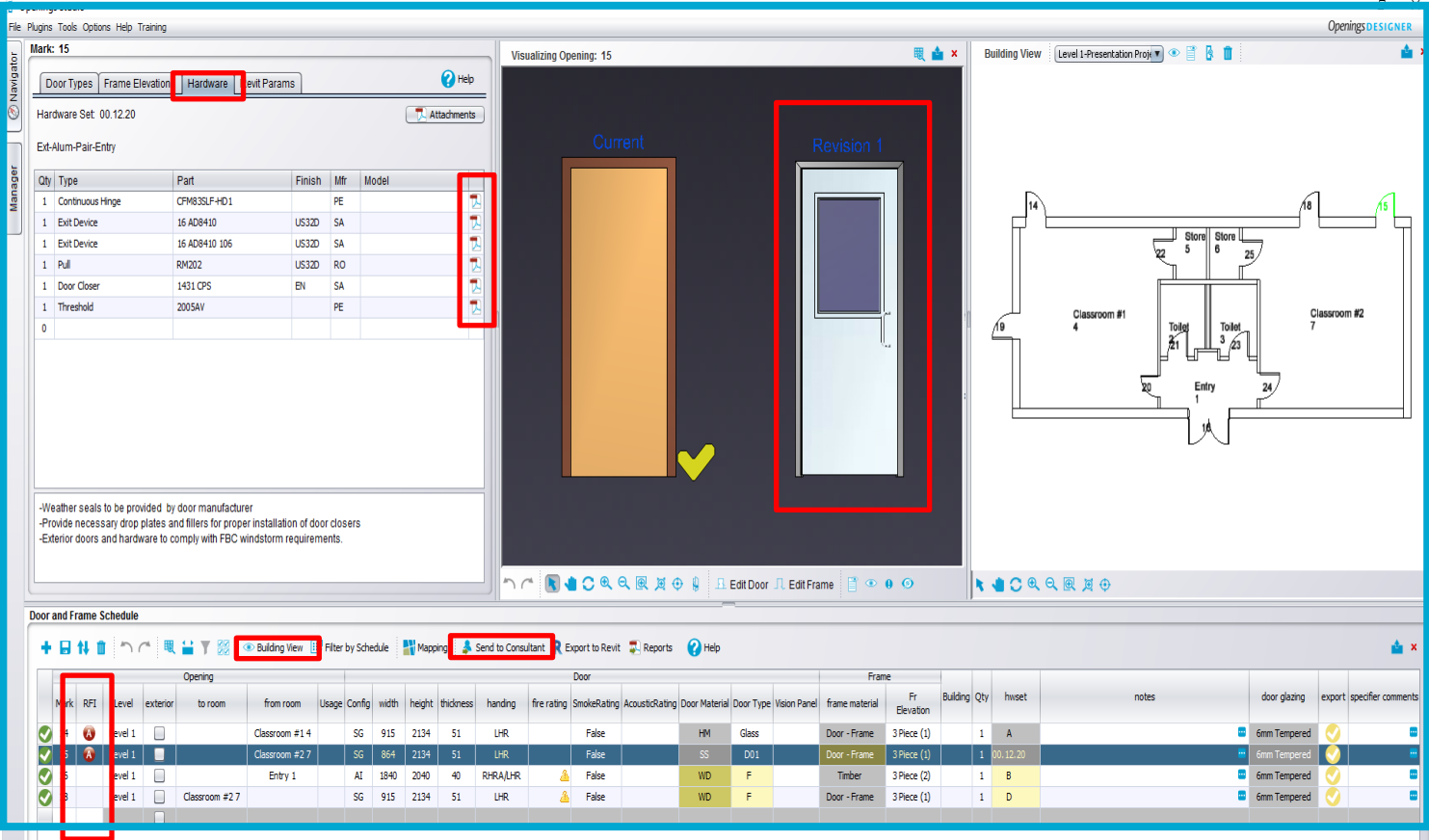
To access analysed projects, select Click on the PRO Button in the Revit Plugin and login.



Open Project from the File menu and then Open Project. The user will reach the below screen. Selecting Open Projects will open the below view for which past projects are visible. The user can then sort and filter the list according to a number of different options.



When you are in a project you can see the hardware Specified per opening in the under the Hardware tab and review the product sheets in the PDF. To see the building view in 3D and floor plan you can click on “Building” View to open the window to the right. When scrolling down the door schedule the views and the openings will change in the view. Our consultants will write to you for RFI’s directly in the door schedule and you can open them and answer our consultants directly there, Click on send to consultant and an automatic email will be generated and send to the consultant.



We can also create new RFA door families directly in Openings Studio, please contact our consultant if you would like to explore this feature more in depth.

# Exporting Projects

When the hardware specification is completed and verified – The newly added Revit parameters of each hardware set and hardware products can be exported back to Revit as new parameters in each of your openings in your project. To ensure your Revit model and door schedule matches with the tender documentations for this project.

Click the “*Export to Revit*” button on the toolbar above the “*Door & Frame Schedule*” to launch the “*Export Wizard*.”

Door & Frame Schedule

# Export Wizard

The first tab in the “*Export Wizard*” is a “*Warning*” that all doors in the model must be relinquished for updating. Click “*Continue*.”

Openings Studio - Export Wizard

ASSA ABLOY | OPENINGS STUDIO

Warning

Opening Selections

Export Options

Export to Revit

Please ensure ownership of all doors in the model are relinquished for updating.

Synchronizing with the central model may be required prior to importing.

Step 1: Accept export warning

Continue >



# Export Options

## Update Option (Yellow Check):

By default, all doors are selected with the **Yellow Checkmark**. This option will add or append Openings Studio parameters to the “Current” Revit door family parameters, but **does NOT** update or modify the Revit door family geometry or model.

## Replace Option (Green Check):

Replace the “**Current**” Revit family with the “Revised” Openings Studio family, including the model, geometry, and parameters. To replace, click “**Change Opening Selections**,” then select openings by clicking the appropriate cells under the “**Export**” column. The cell should change from a Yellow Checkmark to a Green Checkmark. Once complete, click “**Continue**” on the “**Export Wizard**.”

Openings Studio - Export Wizard

ASSA ABLOY | OPENINGS STUDIO

Warning

Opening Selections

Export Options

Export to Revit

All project openings from Revit have been Yellow Checked by default.

- Select the "Yellow Check" to **export only family text parameters** for that opening  
Current number of Openings with Yellow Check: 47
- Select the "Green Check" to **export Openings Studio families** for that opening  
Current number of Openings with Green Check: 0

Number of Exportable Openings: 48

Number of Openings Not Checked: 1

Change Opening Selections

To make changes to your current export selections, Click the button to the left, or move directly to the Export column in the Door and Frame Schedule.

Step 2: Verify opening selections

Back

Continue

Wall Thickness	Label	Add	HWSet	Comments	Specifier Remarks	Note 1	Note 2	Gauge	Depth	Steel Type	Construction	Door Price	Frame Price	Export
0			1.0						5.75			N/A	N/A	✓
0			1.0						5.75			N/A	N/A	✓
352			3.0						178			N/A	N/A	✓
124			4.0						149			N/A	N/A	✓
124			4.0						149			N/A	N/A	✓
124			4.0						149			N/A	N/A	✓
124			4.0						149			N/A	N/A	✓
124			4.0						149			N/A	N/A	✓
124			4.0						149			N/A	N/A	✓
124			4.0						149			N/A	N/A	✓
152			4.0						178			N/A	N/A	✓
152			4.0						178			N/A	N/A	✓

Cost Per Opening: \$0.00

Total Cost: \$0.00

Copyright © 2017, ASSA ABLOY. All rights reserved. Reproduction in whole or in part without the express written permission of ASSA ABLOY is prohibited.

ASSA ABLOY

# Export Options

To select the appropriate options available under the “*Export Options*” tab, click “*Select Parameters*” and choose the parameters that will be added or appended to the current family in Revit. Once the “*Parameter Options*” have been selected, click “*OK*” in the “*Parameter Options*” screen and then “*Continue*” on the “*Export Wizard*”. The selected parameters apply to **Yellow Checkmark** openings only. **Green Checkmark** openings are new Revit families and are exported to Revit with the complete package of Openings Studio parameters.

Openings Studio - Export Wizard

ASSA ABLOY | OPENINGS STUDIO

Warning

Opening Selections

Export Options

Export to Revit

The default minimum project parameters have been selected for export to Revit

Click “Change Openings Selections”

Select Parameters

☐ Use e-SPECS Assembly Codes

☐ Create Door Schedule Images

☐ Create Elevation Sheets

☒ I agree to the [Terms and Conditions](#)

Step 3: Accept Openings Studio's Terms and Agreements

Back

Continue

Parameter Options

Openings Studio can export to built-in parameters, project parameters, shared parameters or any combination. The parameters will be added to every door in the Revit project and will be populated if data exists.

Please select the parameters you would like included in this export from the tree below or select a parameter template from the drop down.

Templates:

☐ Parameters

☒ Built-In

☒ Project

☒ Shared

Note: Any parameters not selected will not be found by Openings Studio on subsequent analysis and may lead to missing information in later revisions

Save as Template

1 Choose parameters to include

Parameter Options

Openings Studio can export to built-in parameters, project parameters, shared parameters or any combination. The parameters will be added to every door in the Revit project and will be populated if data exists.

Please select the parameters you would like included in this export from the tree below or select a parameter template from the drop down.

Templates:

☐ Parameters

☐ Built-In

☐ Comments

☐ Fire Rating

☐ Project

☐ AAOS Arch Door Material Type

☐ AAOS Arch Door Panel Type

☐ AAOS Arch Frame Material

☐ AAOS Arch Frame Type

☐ AAOS Door Elevation Type

☐ AAOS Frame Elevation Type

☐ AAOS HW Set

☐ AAOS Arch Door Finish

☐ AAOS Arch Frame Finish

☐ AAOS Delivery Date

☐ AAOS Door Acoustic Rating

☐ AAOS Door Add Ons

☐ AAOS Door Bottom Rail Width

☐ AAOS Door Configuration

☐ AAOS Door Cost

☐ AAOS Door Cross Rail Width

☐ AAOS Door Edge

☐ AAOS Door Finish Color

Note: Any parameters not selected will not be found by Openings Studio on subsequent analysis and may lead to missing information in later revisions

2 Click “OK”

Ok

Cancel

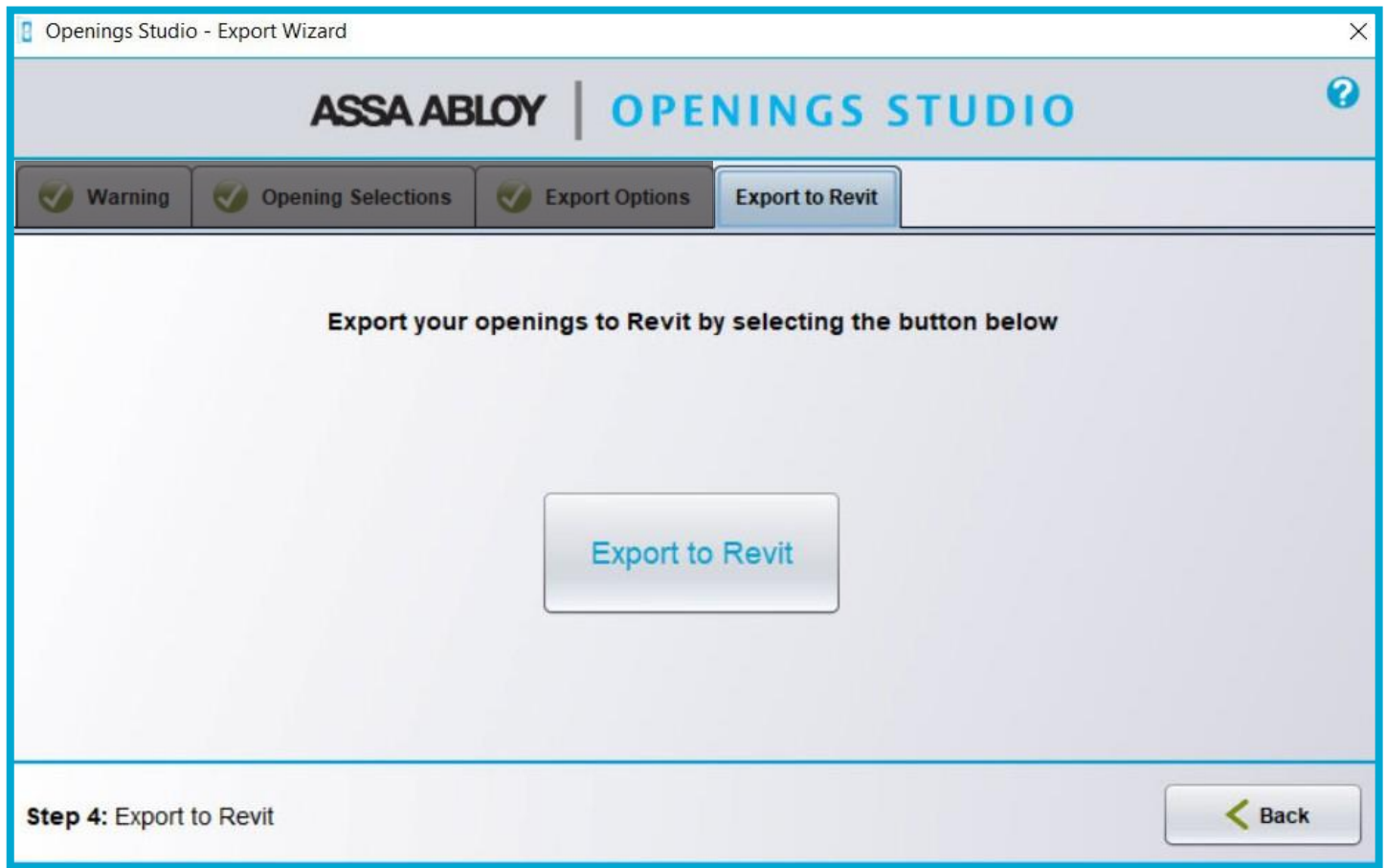
Copyright © 2017, ASSA ABLOY. All rights reserved. Reproduction in whole or in part without the express written permission of ASSA ABLOY is prohibited.

ASSA ABLOY

## Export

Click "Export to Revit."

If the project is open in Revit, Openings Studio will automatically export the information back to Revit. If the project is not open, a message will appear with instructions for selecting the "**Import**" button on the Openings Studio Add-In in Revit.



## Finished!

Once the Export/Import has finished, the data has transferred to Revit and the process is complete. Check your Revit file and the door parameters will now be updated. If you have questions or need assistance, please contact your local ASSA ABLOY Openings Studio consultant.

