



Mortise Lockcase

A mortise lock is a type of locking mechanism installed within a mortise pocket in the edge of a door. It consists of a lock body containing the internal components like the latch and deadbolt, which are operated by a key. Mortise locks offer robust security and durability due to their construction, making them suitable for both residential and commercial applications. The trim set, including the knob or lever handles, complements the functionality of the mortise lock.

Mortise Lock

L100 Series Feature & Benefits

Mortise Lock case L100 Series

Application

ASSA ABLOY L100 Series Mortise Lock is designed for high frequency usage applications such as public access buildings where deliberate abuse likely takes place

Specifications and Features

- Modular case across functions for rapid door prepping and installation
- 72mm centers, backset in 50/55/60/65mm
- 8mm follower with spindle gripping function
- Reversible latchbolt in solid stainless steel
- Double throw deadbolt in solid stainless steel with 20mm Projection
- Suitable for sprung and most un-sprung lever furniture
- Stainless steel faceplate and strike in square and radius version (radius version improves door prep efficiency with machine routing)
- Compatible with bolt through furniture and escutcheons of 38mm centers



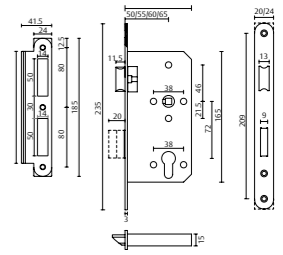
Mortise Lock

L100 Series

Mortise Lockcase Sash Lock

Model no.: L101

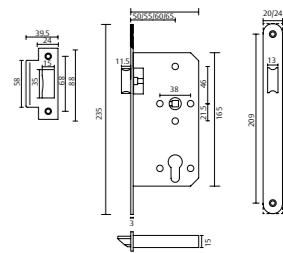
Description: Suitable for latched doors requiring deadbolt locking security.



Mortise Lockcase Latch lock

Model no.: L102

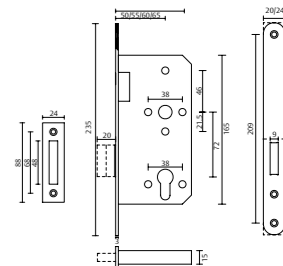
Description: Suitable for latched doors remaining unlocked at all times.



Mortise Lockcase Dead Lock

Model no.: L103

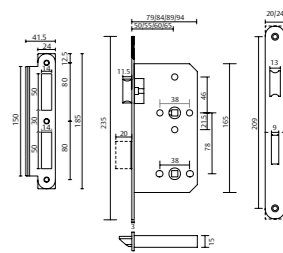
Description: Suitable for unlatched doors with deadbolt locking security.



Mortise Lockcase Bathroom lock

Model no.: L105

Description: Suitable for bathroom door with deadbolt locking privacy. Emergency unlocking provided by coin release slot.



Mortise Lock

L200 Series Feature & Benefits

Mortise Lock case L200 Series

Application

ASSA ABLOY L200 Series Mortise Lock is designed for medium frequency usage applications.

Specifications and Features

- Modular case across functions for rapid door prepping and installation
- 72mm centers, backset in 50/55/60/65mm
- 8mm follower with spindle gripping function
- Reversible latchbolt in solid stainless steel
- Double throw deadbolt in solid stainless steel with 20mm Projection
- Suitable for sprung and most un-sprung lever furniture
- Stainless steel faceplate and strike in square and radius version (radius version improves door prep efficiency with machine routing)
- Compatible with bolt through furniture and escutcheons of 38mm centers
- Matching finish on latchbolt and deadbolt



Mortise Lockcase Sash Lock

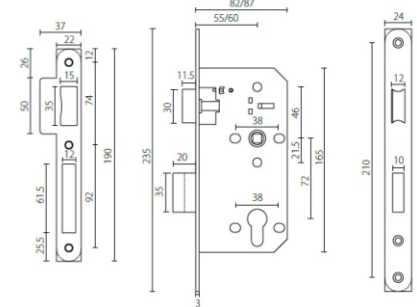
Model no.: L201

Description: Sashlock/Entry

Application: Suitable for latched doors requiring deadbolt locking security.

EN 12209: 2003 Classification

2	S	8	1	0	G	3	B	C	2	0
---	---	---	---	---	---	---	---	---	---	---



Mortise Lockcase Latch Lock

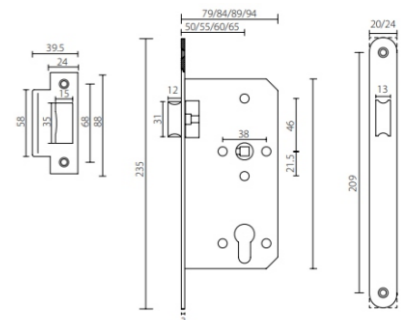
Model no.: L202

Description: Latch/Passage

Application: Suitable for latched doors remaining unlocked at all times

EN 12209: 2003 Classification

2	S	8	1	0	G	-	B	0	2	0
---	---	---	---	---	---	---	---	---	---	---



Mortise Lockcase Dead Lock

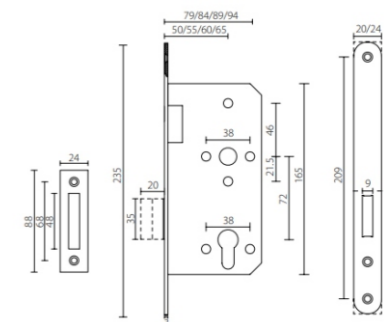
Model no.: L203

Description: Deadlock

Application: Suitable for unlatched doors with deadbolt locking security

EN 12209: 2003 Classification

2	S	8	1	0	G	3	B	C	0	0
---	---	---	---	---	---	---	---	---	---	---



Mortise Lock

L300 Series Feature & Benefits

Mortise Lock case L300 Series

Key features:

- Fire tested to EN1634-1
- Approved by Warrington Certifire
- Non-Handed- Latch Reversible

Benefits:

- High corrosion resistance
- Versatile usage
- High durability
- Can be used for fire doors

Standard & Certification

Fire rated EN1634 EN 12209

Technical details:

- Center to center - 72mm
- Backset - 45mm
- 8mm Centered Steel Follower
- Fits standard cam euro profile cylinder
- Double throw projection deadbolt - 20mm
- Suitable for sprung and un-sprung lever furniture
- Suitable for hinged timber, metal and fire doors
- All mortise lockcase contain suitable strike plate and screws

The range of ASSA ABLOY mortise lockcases consists of various functions to meet the most enhanced security and locking requirements



Mortise Lockcase Sashlock/Entrance Lockcase

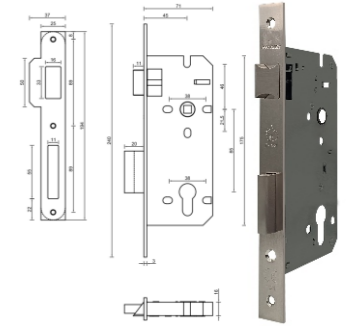
Model no.: L301

Description: ASSA ABLOY Euro Mortise Sashlock Lockcase
Backset: 45mm
C to C: 85mm

Finish: SSS - Satin Stainless Steel
SN - Satin Nickel
* Other Finishes available upon request

EN 12209: 2003 Classification

2	M	4	1	0	C	3	B	C	2	0
---	---	---	---	---	---	---	---	---	---	---



Mortise Lockcase Passage Latch Lockcase

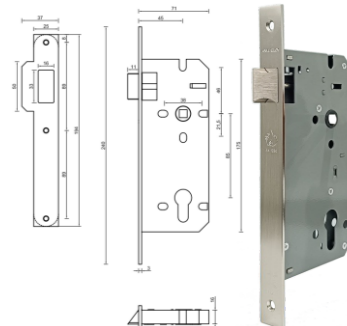
Model no.: L302

Description: ASSA ABLOY Mortise Passage Latch Lock
Backset: 45mm
C to C: 85mm

Finish: SSS - Satin Stainless Steel
SN - Satin Nickel
* Other Finishes available upon request

EN 12209: 2003 Classification

2	M	4	1	0	C	-	B	C	2	0
---	---	---	---	---	---	---	---	---	---	---



Mortise Lockcase Deadlock Lockcase

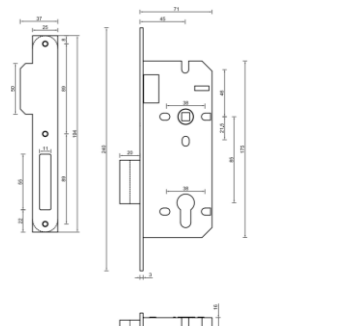
Model no.: L303

Description: ASSA ABLOY Euro Mortise Deadbolt Lock
Backset: 45mm
C to C: 85mm

Finish: SSS - Satin Stainless Steel
SN - Satin Nickel
* Other Finishes available upon request

EN 12209: 2003 Classification

2	M	4	1	0	C	3	B	C	0	0
---	---	---	---	---	---	---	---	---	---	---



Mortise Lock

N1550 Sash lock for fire doors

Mortise Lock case N1550 Series

Product description

OneSystem sash lock N1550 according to EN 12209 for single-leaf doors / approved for fire barriers according to EN 1634 / product-specific environmental product declaration (EPD) according to EN 15804 with article-specific parameters / tested for 1,000,000 cycles and 300 kg door weight

Overview of Advantages

- Environmental product declaration (EPD) in accordance with EN 15804
- Tested for 1,000,000 cycles and 300 kg door weight
- Compliance with EN 12209
- Small rear backset 15 mm
- Continuous screw connection of escutcheons
- Suitable espagnolette integrated in the strike plate
- 20 mm bolt throw with a single rotation
- Also available as a fire protection version
- Latch DIN left/right reversible without tools
- Closed lock case at the top and bottom
- Stainless steel faceplate
- Security fittings and oval roses can be screwed on through the lock
- Deadbolt with anti-tampering design
- Developed for Euro profile cylinder and Swiss round Profile cylinder

Note

- For U-shaped versions, the end caps are included in the scope of supply. Please note: for U-shaped versions, the backset is shortened by 1mm.

Technical data

Backset	30, 35, 40, 45 mm
Distance	92 mm (prepared for Euro profile cylinders)
Face plate shape	U-shaped face plate: U6 x 24 mm Flat face plate: F3 x 20 mm, F3 x 24 mm, R3 x 20 mm, R3 x 24 mm
Material face plate	Stainless steel
DIN direction	DIN L/R (symmetrical face plate)
Bolt throw	20 mm
Standards	EN 12209
Face plate length	185, 270, 320 mm (depending on version)
Door type	Aluminium/steel profile
Functions	mechanical
door system	Single-leaf door
Screw type	Mortise lock
Fire protection	Yes
Leaf type	Active door leaf



Mortise Lock

Sliding Door Lockcase

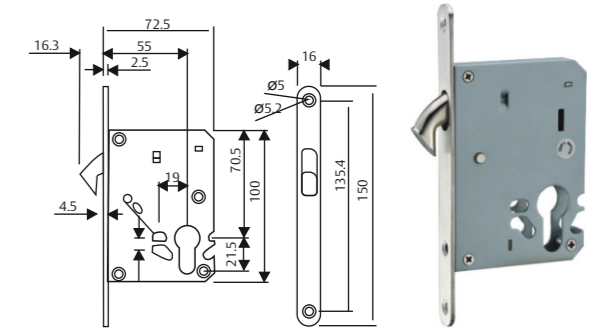
Mortise Lockcase Sliding door lock

Model no.: ASLD-02

Description: ASLD-02 ASSA ABLOY Euro mortise sliding door lockcase

Dimensions: 167 mm x 21 mm x 66 mm

Finish: Satin Stainless Steel



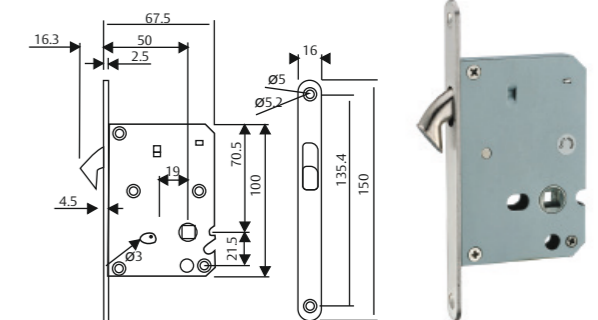
Mortise Lockcase Sliding door lock

Model no.: ASLD-03

Description: ASLD-03 ASSA ABLOY Euro mortise sliding door lockcase with spindle follower for lock with spindle follower

Dimensions: 167 mm x 21 mm x 66 mm

Finish: Satin Stainless Steel



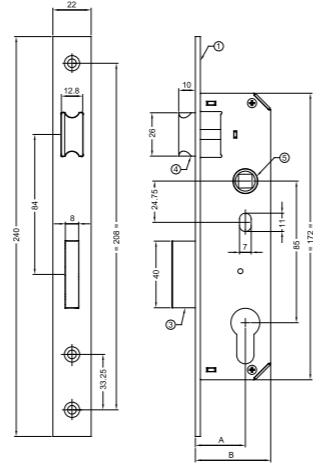
Mortise Lock

Narrow Stile Mortise Lock

Mortise Lockcase AA 2400 Series

- Model no.:** AA 2403 3025 / AA2403 3085 / AA2403 3585
- Description:** AA2403 ASSA ABLOY Narrow stile Mortise Sash Lock
- Material Specification:**
- Front Plate: SS202 Grade
 - Striker Plate: SS202 Grade
 - Dead bolt: Zinc
 - Latch bolt: Zinc
- Finish:** Satin Stainless Steel
Matt Black
- SS ● Matt Black

DIMENSION CHART			
SR NO	BST	DIM 'A'	DIM 'B'
1	25 mm	25	35.2
2	30 mm	30	40.2
3	35 mm	35	45.2



Mortise Lockcase AA 2400 Series

- Model no.:** AA 2404 3025 / AA2404 3085 / AA2404 3585
- Description:** AA2404 ASSA ABLOY Narrow stile Mortise Dead Lock
- Material Specification:**
- Front Plate: SS202 Grade
 - Striker Plate: SS202 Grade
 - Dead bolt: Zinc
- Finish:** Satin Stainless Steel
Matt Black
- SS ● Matt Black

DIMENSION CHART			
SR NO	BST	DIM 'A'	DIM 'B'
1	25 mm	25	35.2
2	30 mm	30	40.2
3	35 mm	35	45.2

