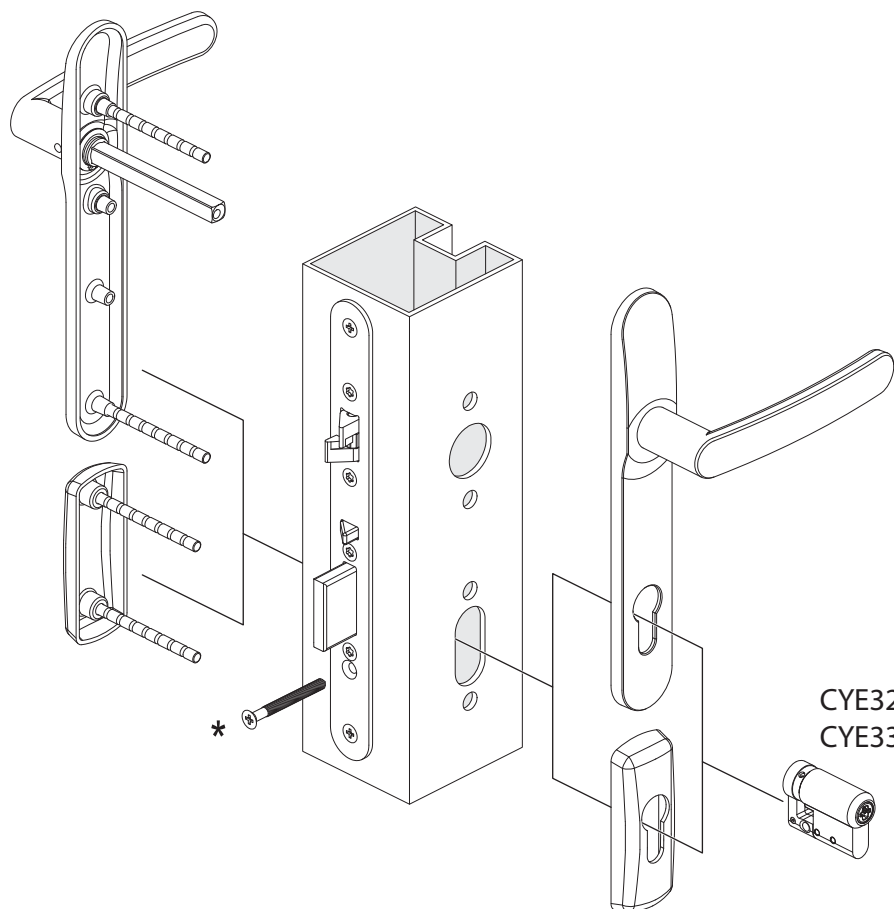


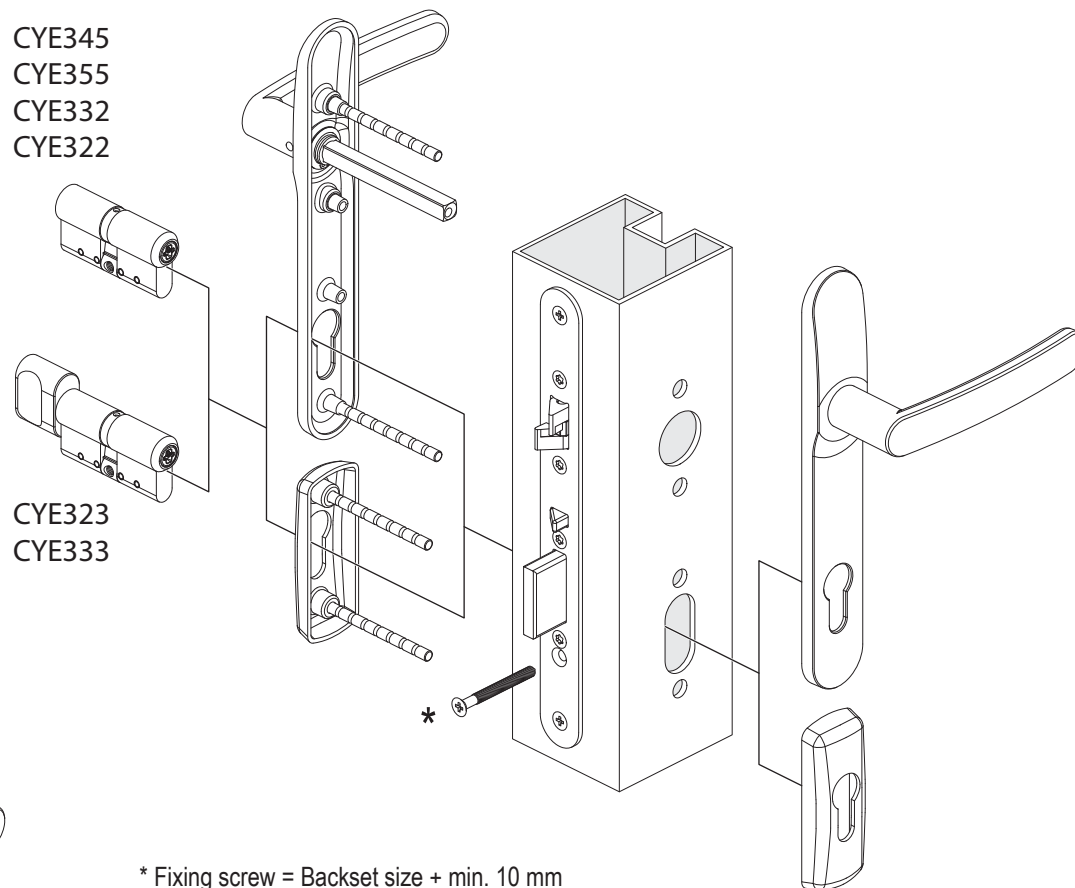
PULSE DIN INSTALLATION
 PULSE DIN INSTALLATIE
 INSTALLATION DU CYLINDRE À PROFIL EUROPÉEN PULSE
 INSTALLAZIONE PULSE DIN
 INSTALACJA PULSE DIN
 PULSE DIN MONTAŽA
 INSTALACIJA PULSE DIN CILINDARA
 INSTALARE PULSE DIN
 PULSE DIN PAIGALDUS
 PULSE DIN UZSTĀDĪŠANA
 PULSE DIN CILINDRŪ MONTAVIMAS
 INSTALACE PULSE DIN



CYE345
 CYE355
 CYE332
 CYE322

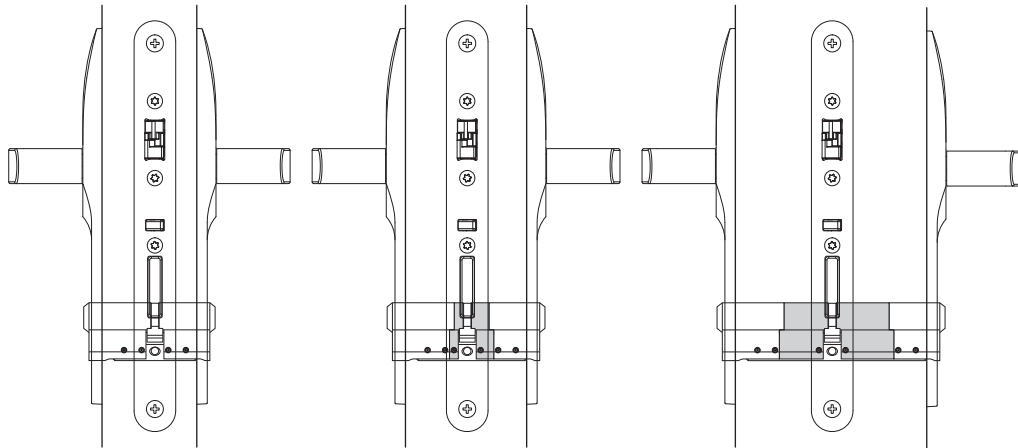
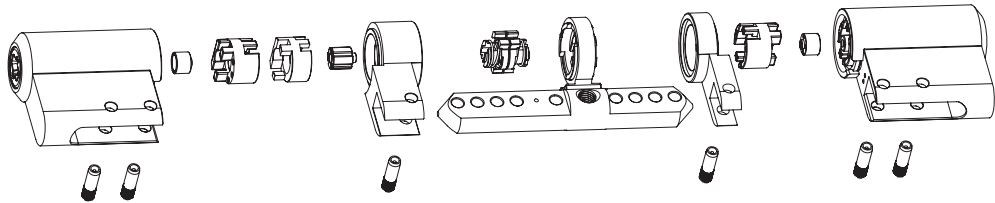
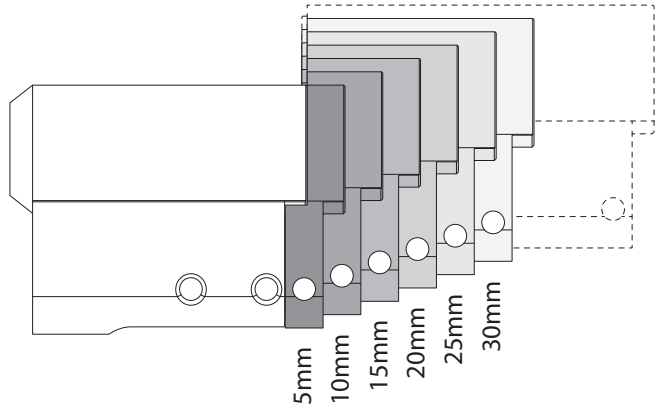
CYE323
 CYE333

CYE321
 CYE331



- * Fixing screw = Backset size + min. 10 mm
- * Bevestigingsschroef = doornmaat + min. 10 mm
- * Vis de fixation : axe de le serrure + 10 mm minimum
- * Vite di fissaggio = dimensione entrata + min. 10 mm
- * Śruba mocująca = rozmiar drzwiczek + min. 10 mm
- * Pritrdilni vijak = Globina ključavnice (backset) + min. 10 mm
- * Vijak = backset dimenzija + min. 10 mm
- * Şurub de fixare = Dimensiune suport + min. 10 mm
- * Kinnituskruvi = tapikaugus + min 10 mm
- * Stiprināšanas skrūves garums = Attālums no slēdzenes korpusa priekšējās plāksnes virsmas līdz cilindra centram + vismaz 10 mm
- * Cilindro tvirtinimo varžtas = atstumas iki cilindra + min. 10 mm
- * Cilindro tvirtinimo varžtas = atstumas iki cilindra + min. 10 mm

PULSE DIN EXTENSION PIECES

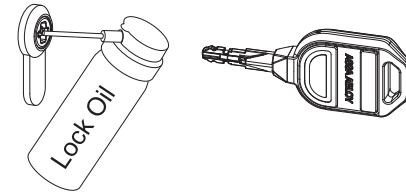


LUBRICATION INSTRUCTIONS FOR END USER

Use only Abloy lock oil or Rivolta TRS oil with cylinders.

Most of the commonly used lock oils contain harmful ingredients for cylinder units and are thus not allowed to be used.

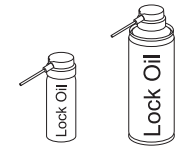
Only the mechanical parts in rear part of the cylinder require little bit of lubricant. Electrical part in the front does not require any lubrication. Too much lubrication in electrical part may cause problems in cylinder function.



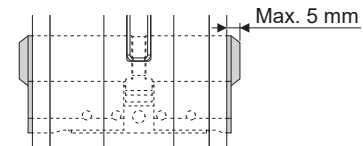
ASSA ABLOY recommends the following lubricants:

ASSA ABLOY Lock Oil
Rivolta TRS
Mineral oils (e.g. sewing machine oil and gun oil)

Do not use oils containing graphite or biolubricants.
They will jam the cylinder and the operation of the lock.



49 ml 200 ml



NOTE: The maximum distance of the installed cylinder end to the hardware/ fitting must not exceed 5 mm

The product should not be modified in any way except in accordance with those modifications described in the instructions. Confirm the suitability of the product from ASSA ABLOY before installing it onto a fire door.

The manufacturer assumes no liability for damages due to the following:

- Cylinder Installation errors
- The cylinder length may only be adjusted for a modular system according to the respective instructions.
- Incorrect installation or dysfunctionality of lock in which the locking cylinder is installed (Pretension on cam)
- Damage to the product due to excessive mechanical stress
- Modification of the product without the express approval of the manufacturer.
- Use for purposes other than those described in this manual
- Damage due to use of inappropriate requirements:
 - The lock manufacturer's specific requirements for the locking cylinder must be observed and taken into account.