



CY110 Dimple Key System

ASSA ABLOY
Opening Solutions

The affordable step up to a Master Key System

Durable, high-performance locks and cylinders with 6-pin technology provide the confidence that your building is secure, inside and out. Robust, reversible keys save users time and stress. A single key can unlock a variety of different locking points.



Certified security

EN 1303:2015 Euro cylinders tested to 1 6 – B – C 5 D*; including SKG** certification plus rigorous testing at ASSA ABLOY labs. Security technology patent protected until 2036.



Attack resistance

Secure anti-pick design with bumping resistance (for keyed alike and keyed to differ), and optional 5 minutes' drilling and 15kN pulling resistance.



Reliable construction

Durable design with 96-hour corrosion resistance and tested for 500,000 lock/unlock cycles.

* with security escutcheon

Experience a safer
and more open world

CY110 Key



For all CY110
locking points



With its convenient, patented dimple security design, the CY110 Key is reversible – it inserts and turns every time. 2.9 mm thickness withstands material fatigue and rounded edges protect against accidental damage.



Reversible key design

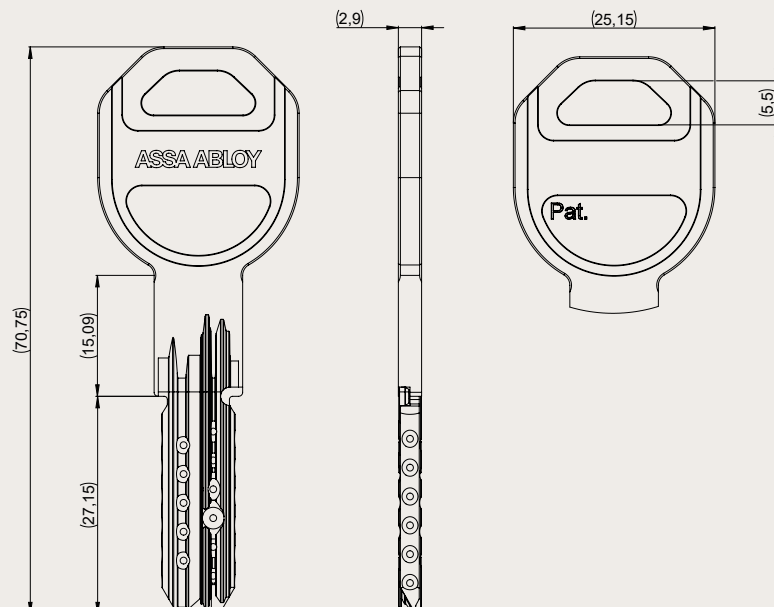


Patent protection
makes unauthorized
key copying illegal

Technical data and features

Security	Patent-protected until 2036, Property card included
Keying	Dimple security design Master key system (MKS); Keyed alike (KA); Keyed to differ (KD)
Number of keys	MKS and KA: according to order; KD: 3
Max. number of effective key differs	92,232
Max. number of MKS profiles	20
Exclusive profiles	10
Profile shape	Paracentric
Raw material	Nickel Silver
Finish	Nickel Silver
Key thickness	2.9 mm
Key neck length	15 mm
Weight	18 g

Dimensions in mm



CY110 Double Euro Cylinder



For internal and external doors



Durable and secure, the CY110 Double Euro Cylinder provides the protection you need to lock your building's doors – inside or out.



Certified security



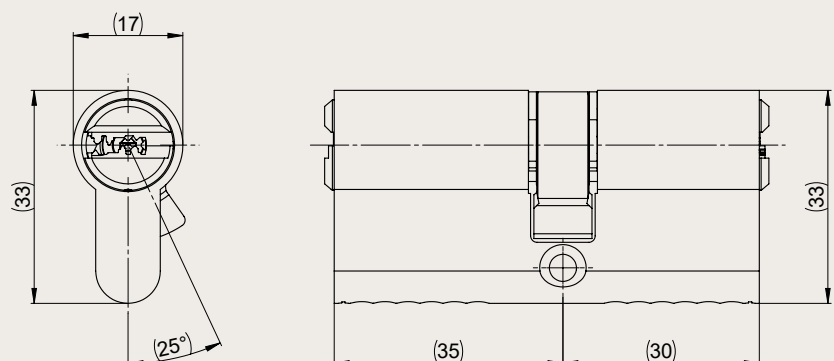
Protection against cylinder attack

Technical data and features

Security	SKG** certified EN 1303:2015 tested, 1 6 - B - C 5 D* Cam DIN 18252 compliant
Attack resistance	Anti-pick Anti-bump (only for KA and KD) Anti-drill: 5 minutes' drilling resistance (optional) Anti-pull: 15 kN pulling resistance* (optional)
Keying	Dimple security design Master key system (MKS); Keyed alike (KA); Keyed to differ (KD)
Number of keys	MKS and KA: according to order; KD: 3
Max. number of effective key differs	92,232
Max. number of MKS profiles	20
Number of pins	6
Raw material	Brass
Finish	Satin Nickel Optional: Polished Brass, Black Chrome
Cylinder length	Minimum: 30 30 mm; 28 30 mm Maximum: 80 80 mm; 28 65 mm Increments: 5 mm (starting from 30 30 mm) Additional: 32.5 32.5
Weight	235 g (length 30 30 mm)
Optional functionality	Emergency clutch Free wheeling cam Gear wheel cam FZG function

*with security escutcheon

Dimensions in mm



CY110 Thumbturn Double Euro Cylinder



For internal and
external doors



A secure solution when privacy is required:
CY110 Thumbturn Cylinders securely lock doors
and can quickly unlock to provide a faster exit.



Certified security



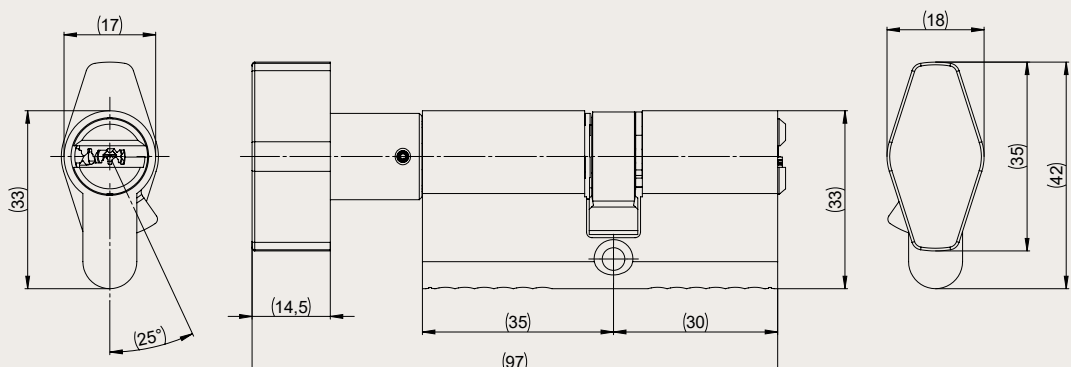
Protection against
cylinder attack

Technical data and features

Security	SKG** certified EN 1303:2015 tested, 1 6 - B - C 5 D* Cam DIN 18252 compliant
Attack resistance	Anti-pick Anti-bump (only for KA and KD) Anti-drill: 5 minutes' drilling resistance (optional) Anti-pull: 15 kN pulling resistance* (optional)
Keying	Dimple security design Master key system (MKS); Keyed alike (KA); Keyed to differ (KD)
Number of keys	MKS and KA: according to order; KD: 3
Max. number of effective key differs	92,232
Max. number of MKS profiles	20
Number of pins	6
Raw material	Brass
Finish	Satin Nickel Optional: Polished Brass, Black Chrome
Cylinder length	Minimum: 30 30 mm; Maximum: 80 80 mm Increments: 5 mm
Thumbturn dimensions	31.5 x 16 x 35 mm (W x H x D)
Weight	318 g (length 30 30 mm)
Optional functionality	Gear wheel cam Clutch release (limited cylinder length) Classroom function + clutch release

*with security escutcheon

Dimensions in mm



CY110 Single Euro Cylinder



For internal doors and elevators



Highly durable cylinder with the performance to secure your building. Keep your interior spaces secure with the CY110 Single Euro Cylinder.

The multi-position cam (8 x 45°) allows to turn the cam into the application's required position.



Certified security



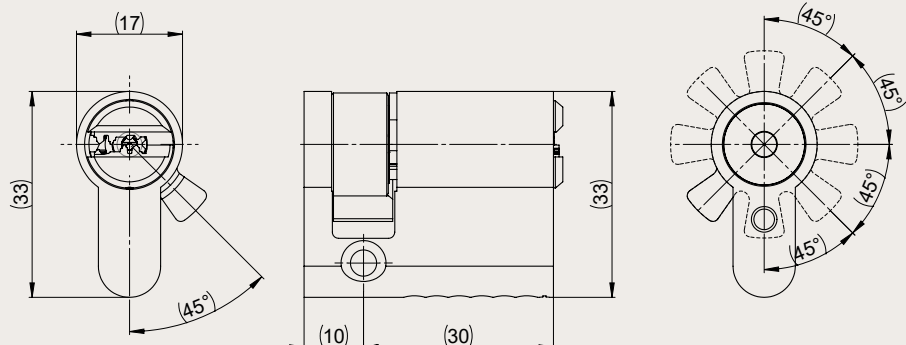
Protection against cylinder attack

Technical data and features

Security	SKG** certified EN 1303:2015 tested, 1 6 - B - C 5 D* Cam DIN 18252 compliant
Attack resistance	Anti-pick Anti-bump (only for KA and KD) Anti-drill: 5 minutes' drilling resistance (optional) Anti-pull: 15 kN pulling resistance* (optional)
Keying	Dimple security design Master key system (MKS); Keyed alike (KA); Keyed to differ (KD)
Number of keys	MKS and KA: according to order; KD: 3
Max. number of effective key differs	92,232
Max. number of MKS profiles	20
Number of pins	6
Raw material	Brass
Finish	Satin Nickel Optional: Polished Brass, Black Chrome
Cylinder length	Minimum: 30 10 mm; Maximum: 80 10 mm Increments: 5 mm
Weight	168 g (length 30 10 mm)
Optional functionality	Elevator version with 2 x M4 housing Thumbturn variant (without anti-drill protection)

*with security escutcheon

Dimensions in mm



CY110 Rim Cylinder



Additional security
for external doors



Secure entrances while at the same time, enabling anyone inside to make an easy exit. The CY110 Rim Cylinder can be used with night latches or other locking devices which are operated from a tailbar.



Certified security

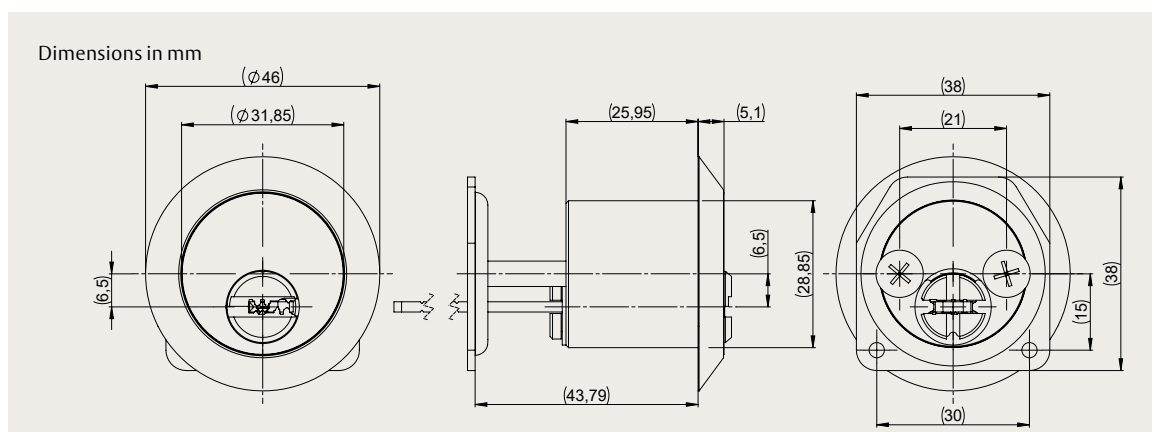


Protection against
cylinder attack

Technical data and features

Security	SKG** certified EN 1303:2015 tested, 1 6 - B - C 5 D*
Attack resistance	Anti-pick Anti-bump (only for KA and KD) Anti-drill: 5 minutes' drilling resistance (optional) Anti-pull: 15 kN pulling resistance* (optional)
Keying	Dimple security design Master key system (MKS); Keyed alike (KA); Keyed to differ (KD)
Number of keys	MKS and KA: according to order; KD: 3
Max. number of effective key differs	92,232
Max. number of MKS profiles	20
Number of pins	6
Raw material	Brass
Finish	Satin Nickel
Dimensions	Face diameter: 32 mm Body diameter: 29 mm
Weight	167 g

*with security escutcheon



CY110 Cam Lock



For indoor and outdoor locking points



Keep sensitive documents and possessions safe. Secure and unlock your letterbox, cabinets and drawers with one single key. When in the unlocked position, the CY110 Cam Lock retains the key to prevent your possessions being left at risk.

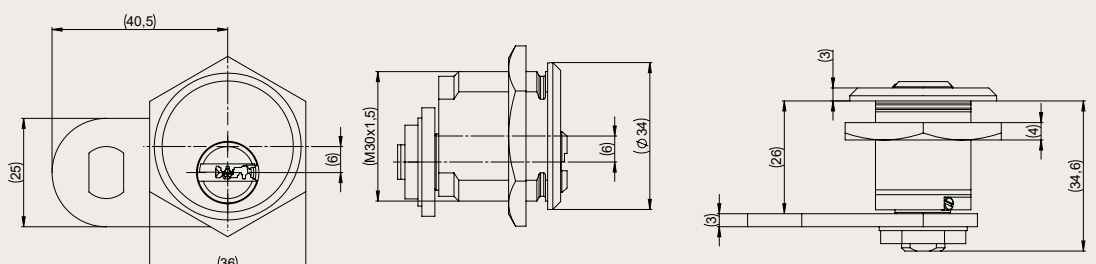


Protection against cylinder attack

Technical data and features

Attack resistance	Anti-pick Anti-bump (only for KA and KD)
Keying	Dimple security design Master key system (MKS); Keyed alike (KA); Keyed to differ (KD)
Number of keys	MKS and KA: according to order; KD: 3
Max. number of effective key differs	92,232
Max. number of MKS profiles	20
Number of pins	6
Raw material	Brass
Finish	Satin Nickel
Dimensions	Face diameter: 32 mm Body diameter: 29 mm Cam: Various designs (adjustable)
Weight	145 g

Dimensions in mm



CY110 Padlock



For indoor and outdoor locking points



Optional: Dust cover

A trusted, robust padlock for multiple applications. Secure almost anything with the CY110 Padlock, inside or outdoors. Suitable for sheds, gates, fences, lockers, storage boxes, bike chains, and more.

When in the unlocked position, the CY110 Padlock retains the key to prevent your possessions being left at risk. The optional dust cover increases corrosion resistance to 240 hours.



Certified security

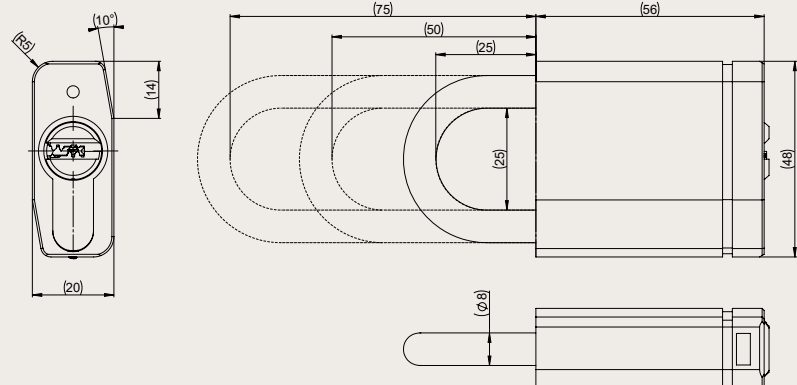


Protection against cylinder attack

Technical data and features

Security	EN 12320:2012 tested – grade 3 IP67 (with dust cover)
Attack resistance	Anti-pick Anti-bump (only for KA and KD)
Keying	Dimple security design Master key system (MKS); Keyed alike (KA); Keyed to differ (KD)
Number of keys	MKS and KA: according to order; KD: 3
Max. number of effective key differs	92,232
Max. number of MKS profiles	20
Number of pins	6
Raw material	Body: Brass Shackle: Hardened Boron Steel
Finish	Polished Chrome
Body dimensions	Width: 52 mm Length: 45 mm Thickness: 20 mm
Shackle diameter	8 mm
Shackle clearance	25 mm; 50 mm; 75 mm
Weight	416 g (25 mm shackle clearance)
Optional functionality	Dust cover (240 hours salt spray test conformance) 25 mm Stainless Steel shackle Non key retaining

Dimensions in mm



Glossary of optional CY110 functionality



An aid to better understanding



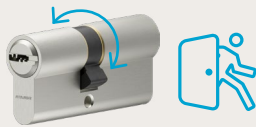
Emergency clutch

When a key is accidentally left in the keyway on one side, you can still operate the cylinder from the other.



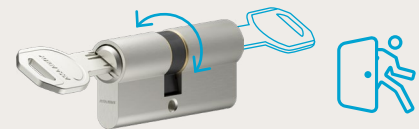
Gear wheel

Cylinders with a gear wheel instead of a cam are used in doors with horizontal lock bar, for example. These locks are designed to work with gear wheels, not a cam.



Free wheeling cam

The cam spins freely through 360 degrees and only engages when a key is inserted. When no key is inserted, none of the plugs operate with the cam. This feature is typically used with panic function, in emergency and panic exit doors (EN 179 and EN 1125).



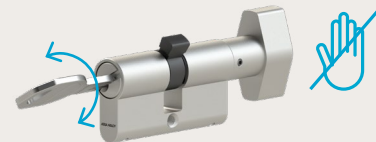
FZG function

Fulfilling the requirements of FZG regulation, this special function combines free wheeling cam and emergency clutch. It is often used in motor-driven locking cylinders.



Classroom function

The thumbturn can only unlock the cylinder (either turning clockwise or anti-clockwise) and cannot override a key being turned. Ensuring that the thumbturn cannot be used to lock users out, which is relevant for applications with children, such as in schools.



Clutch release

Insertion of the key in a clutch release thumbturn cylinder overrides the thumbturn if being held closed. A health and safety feature, ensuring that a user is not able to barricade themselves within a room. Suitable for a variety of applications, most notably the health sector.

The ASSA ABLOY Group is the global leader in access solutions. Every day, we help billions of people experience a more open world.

ASSA ABLOY Opening Solutions leads the development within door openings and products for access solutions in homes, businesses and institutions. Our offering includes doors, door and window hardware, locks, access control and service.

ASSA ABLOY
Opening Solutions

ASSA ABLOY Opening Solutions EMEIA
Dukes Court
Dukes Street
Woking
GU21 5BH
United Kingdom
assaabloy.com