

Aperio® H100 Wireless Handle

ASSA ABLOY
Opening Solutions

Powerful access control inside an award-winning slimline door handle

The ASSA ABLOY Aperio H100 is the easy, aesthetically pleasing way to upgrade access control: It is fitted without wiring or drilling at the door and works with almost any system, via Online, Offline or OSS-standard offline integration.

Experience a safer
and more open world

Inbuilt LED instantly communicates if access is granted or denied.

Discreet handle with minimum footprint and contemporary design.

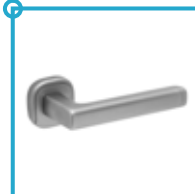


U- handle adapter available as an accessory.



Inside handle always engaged.

All electronics and functionality are inside the outer part of the handle.



Easy integration

Aperio H100 works seamlessly with access control systems integrated to Aperio via AADP protocol or Wiegand hub. No database integration required.



Quick installation

It takes a few minutes to swap a mechanical handle for an Aperio H100.



Flexibility

Can be used with the most common European (DIN) mortise locks – in wooden, steel, and tubular frame doors (and glass doors with standard lock cases).



Convenience

Aperio H100 reads industry-leading RFID credentials, as well as mobile (NFC and BLE).

Versions:

Available in EURO and SCANDINAVIA versions.



Aperio® H100 EURO | For indoor use

Technical data and features

		
ⓘ	Authentication	CARD or Mobile
	RFID Technologies	iCLASS, iCLASS SE, iCLASS Seos, MIFARE Classic, Mifare Classic SE, Mifare Ultralight, Mifare Plus, Mifare DESFire 0.6, Mifare DESFire EV1, Mifare DESFire EV2, Mifare DESFire EV3 (EV2 and EV3 only in Legacy mode), Mifare DESFire SE, PicoPass, ISO 14443A UID, ISO 14443B UID, ISO 15693 UID
	RFID reading	UID / Sector / Block / Application / File / Depending on the RFID technology
	RFID Reading range	Up to 4 cm
	Mobile Technology	NFC and BLE
✓	Approvals	CE, UKCA, Fire EN 1634
	Dimensions	56 × 55 × 13,5 mm (Rose dimensions H × W × D)
	Version	Left- and right-hand versions
	Handle	L-Shape, U-Shape through adapter (accessory)
	Surface	Satin chrome
	Spindle	7 mm and 8 mm spindle and 7-8 mm adapter included, 9 mm available as accessory
	Door leaf thickness	Between 35-80 mm but with accessory "10 mm distance ring" thinner doors can be used
	Backset	Min 30 mm
	Battery	1 × Lithium CR123A
	Battery life (Based on reader type)	30 openings per day for 50 months
	Radio standard	IEEE 802.15.4 (2.4 GHz)
	Encryption (radio communication)	AES 128 bits
	Distance between the device and the hub	Up to 25m depending on the building environment
	Class of protection	IP42
	Operating temperature range	0°C to 55°C
	Relative humidity	< 85% (condensation-free)
	Status	LED (red/green/orange)
	Communication interfaces	Communication via radio (USB dongle) or USB type B adapter (accessory)
	Offline and Online operation modes	Aperio Online; Aperio Offline; Standard OSS Offline



It includes:

- 1 pair of handles with battery (Lithium CR123A)
- Cutable fixing screws
- 7 mm and 8 mm compatible spindle
- Installation instructions



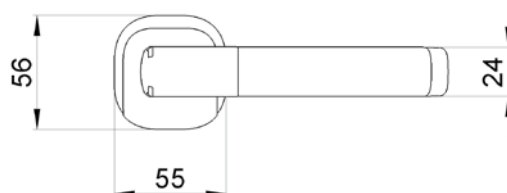
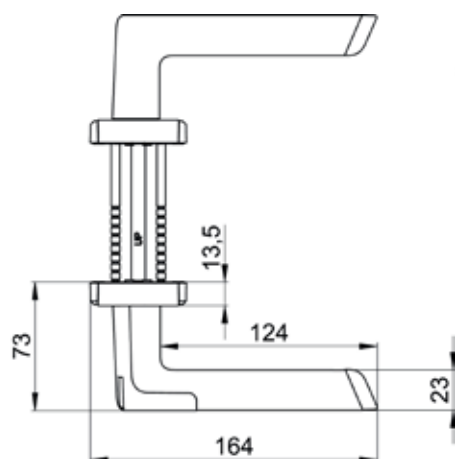
Communicates with:

- RS485 Communication Hub
- Aperio IP Communication Hub
- Wiegand Interface (Standard and advanced versions) Communication Hub

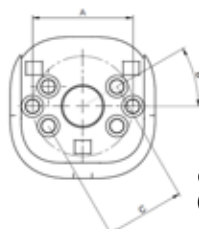


Smart Credential Handling:

Up to 1000 users can be granted access even if the EAC is temporarily down.



A = 38mm (Euro model)



B = 30°
(Scandinavian model)

C = 30mm
(Scandinavian model)

ASSA ABLOY Opening Solutions EMEIA

Digital and Access Solutions

Dukes Court

Dukes Street

Woking GU21 5BH

United Kingdom

© Images: All rights reserved by ASSA ABLOY. We reserve the right to make technical modifications. Version: 3348245_Aperio_H100_Euro_Datasheet_05_2023_ENG_EMEIA