

Aperio® C100

Wireless Knob Cylinder

ASSA ABLOY
Opening Solutions

The non-disruptive way to extend access control

The ASSA ABLOY Aperio C100 is the quickest way to upgrade access control: It is fitted without wiring or drilling at the door and works with almost any system, via Online, Offline or OSS-standard offline integration.

Experience a safer
and more open world

Metal single knob
cylinder Euro Profile –
for use indoors.

Main electronics (RFID + radio)
in the outside knob – secure
electronics inside cylinder core.

Freely rotating lock cam.

Rubber sleeve available
for enhanced grip.

Inbuilt LED instantly
communicates if access
is granted or denied.



Easy integration

Aperio C100 works seamlessly with access control systems integrated to Aperio via AADP protocol or Wiegand hub. No database integration required.



Quick installation

It only takes a few minutes to swap a mechanical cylinder for an Aperio C100.



Flexibility

Compatible with all European DIN/Swiss mortise locks. Also suitable on glass doors. Secure sensitive assets by retrofitting lockers, cabinets or server racks.









Convenience

Aperio C100 reads industry-leading RFID credentials, as well as mobile (NFC).

Aperio® C100 EURO profile – single | For indoor use

Technical data and features

①	Authentication	CARD or Mobile
	RFID Technologies (Based on reader type)	iCLASS, iCLASS SE, iCLASS Seos, MIFARE Classic, Mifare Classic SE, Mifare Ultralight, Mifare Plus, Mifare DESFire 0.6, Mifare DESFire EV1, Mifare DESFire EV2, Mifare DESFire EV3 (EV2 and EV3 only in Legacy mode), Mifare DESFire SE, PicoPass, ISO 14443A UID, ISO 14443B UID, ISO 15693 UID, LEGIC-only reader available
	RFID reading	UID / Sector / Block / Application / File / LEGIC® Segment Data – Depending on the RFID technology
	RFID Reading range	Up to 4 cm
	Mobile technologies	NFC
✓	Approvals	CE, UKCA, EN 15684:2012 (16B0AF30), fire EN1634 door up to T90
	Version	Fixed or demountable knob versions with RFID-Reader
	Knob dimensions	44 × 32 mm (L × Ø) for standard electronics, 46,5 × 32mm (L × Ø) for demountable electronics
	Surface	Knob surface: Stainless steel
	Cylinder length (LENGTH=A/LENGTH=B)	Basic length 30 mm, extendable in 5 mm increments
	Fixing screw	60, 70, 85 mm or without
	Battery	1 × Lithium CR2
	Battery life	10 openings per day for 27 months
	Radio standard	IEEE 802.15.4 (2.4 GHz)
	Encryption (radio communication)	AES 128 bits
	Distance between the RFID Reader and hub	Up to 25m depending on the building environment
	Class of protection	IP 65*
	Operating temperature range	-20°C to 55°C*
	Relative humidity	< 85% (condensation-free)
	Status	LED (red/green/orange)
	Communication interfaces	Communication via radio (USB dongle) or Micro-USB cable (accessory)
	Offline and Online operation modes	Aperio Online; Aperio Offline; Standard OSS Offline
* The C100 is for indoor use, outdoor environments may affect product operability.		



It includes:

- 1 single knob cylinder with battery (Lithium CR2)
- Optional fixing screw
- Installation instructions
- Knob tool needs to be ordered separately



Communicates with:

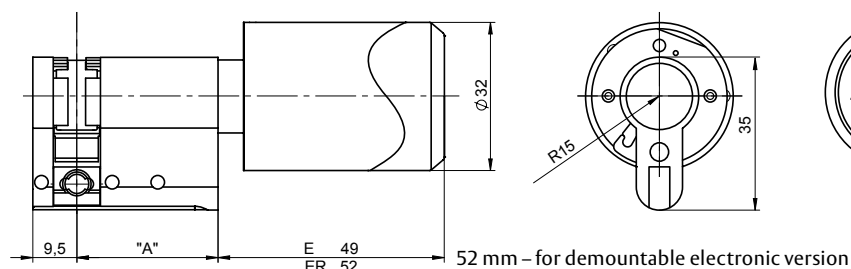
- RS485 Communication Hub
- Aperio IP Communication Hub
- Wiegand Interface (Standard and advanced versions) Communication Hub



Smart Credential Handling:

Up to 1000 users can be granted access even if the EAC is temporarily down.

Dimensions in mm



ASSA ABLOY Opening Solutions EMEA

Digital and Access Solutions
Dukes Court
Dukes Street
Woking GU21 5BH
United Kingdom

© Images: All rights reserved by ASSA ABLOY. We reserve the right to make technical modifications. Version: 3348245_Aperio_C100_Single_Datasheet_05_2023_ENG_EMEA