

Installation Guide

ITGL900

CONTENTS



2mm Allen Key x1
3mm Allen Key x1



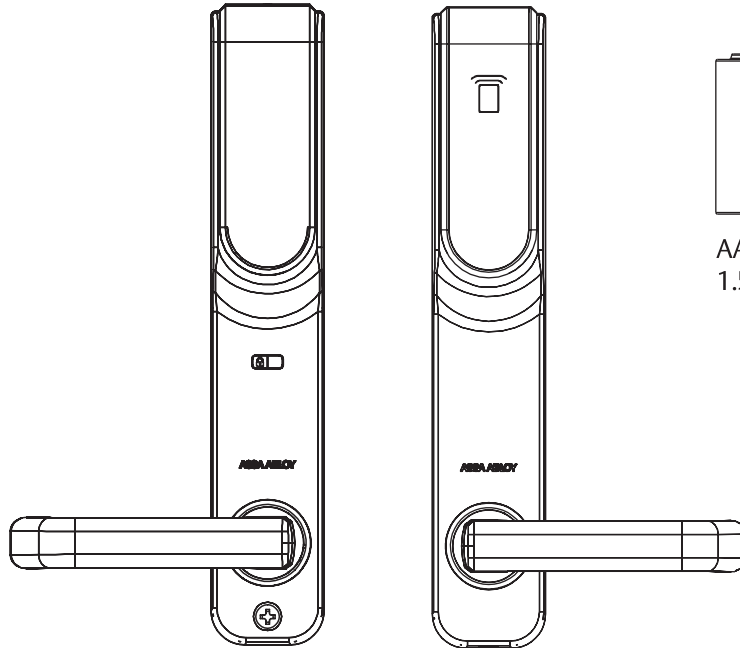
Battery Cover
black screw x1



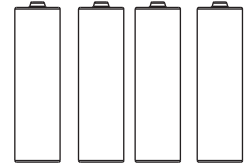
30mm CSK screw x1



35mm CSK screw x1



Interior Escutcheon Exterior Escutcheon



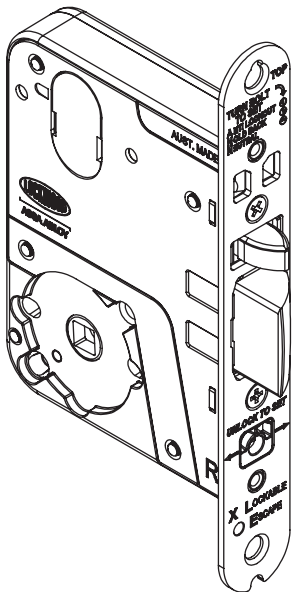
AA Batteries x 4
1.5V

Note: Integral system activation card is required for function test. It is not supplied in the pack.

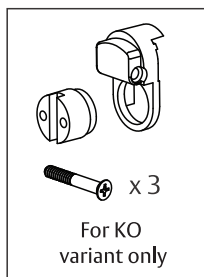
P/No. ITGL900-121 (3)

LOCK OR LATCH OPTIONS

Standard mortice lock

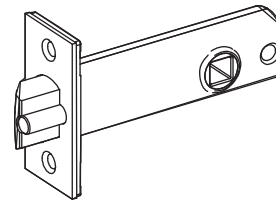


3772NOHDSS Mortice lock



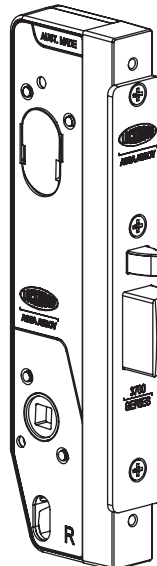
Cylinder extension kit
Use for door thicknesses
from 44 to 65mm

530 Latch



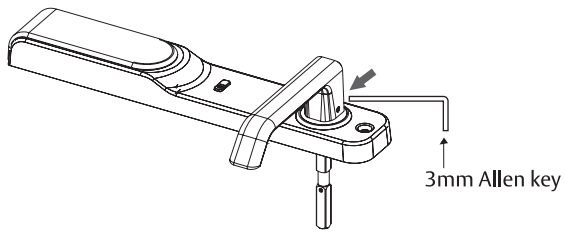
Available in 60, 89
and 127mm backsets

Short backset mortice lock



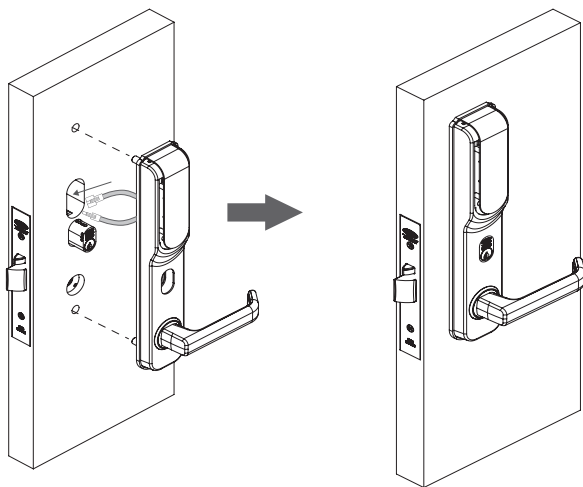
Compatible with 30 and 38mm backsets only.
Not available in KO variant.
Note 30mm backset allows only 2mm
clearance from escutcheon to edge of door.

HANDING THE ESCUTCHEONS

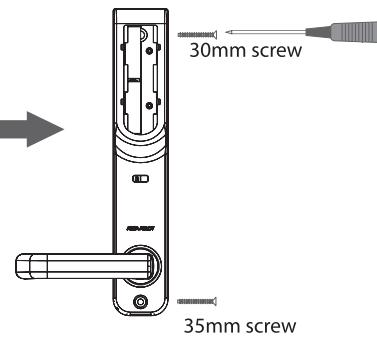
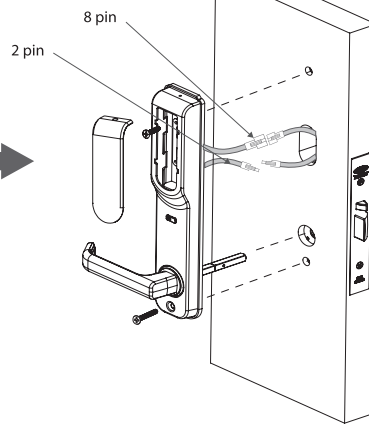


Place lever on escutcheon and tighten the grub screw. Ensure that the grub screw is on the underside of the lever. Repeat the process for the other escutcheon.

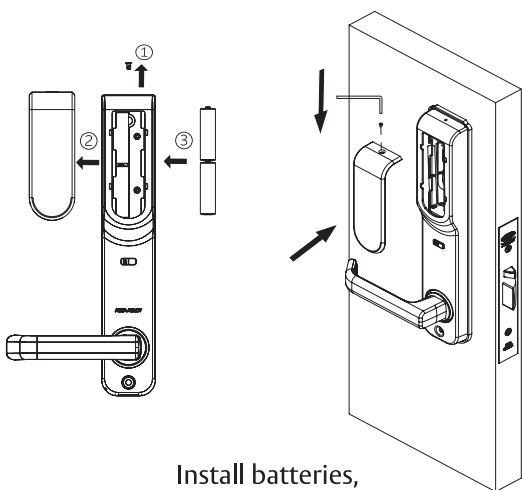
ESCUTCHEONS INSTALLATION



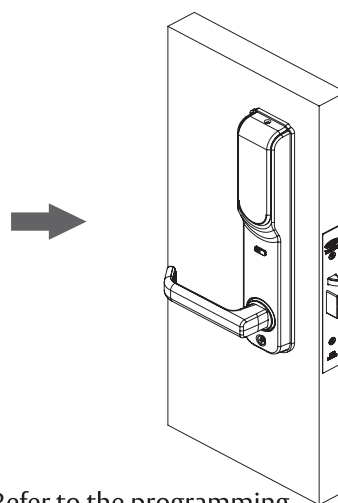
Connect the two cables between internal and external escutcheons.



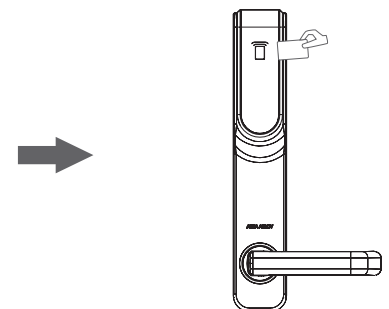
Tighten the 2 screws through the internal escutcheon.



Install batteries, battery cover and secure with screw.



Refer to the programming guide to complete set up.

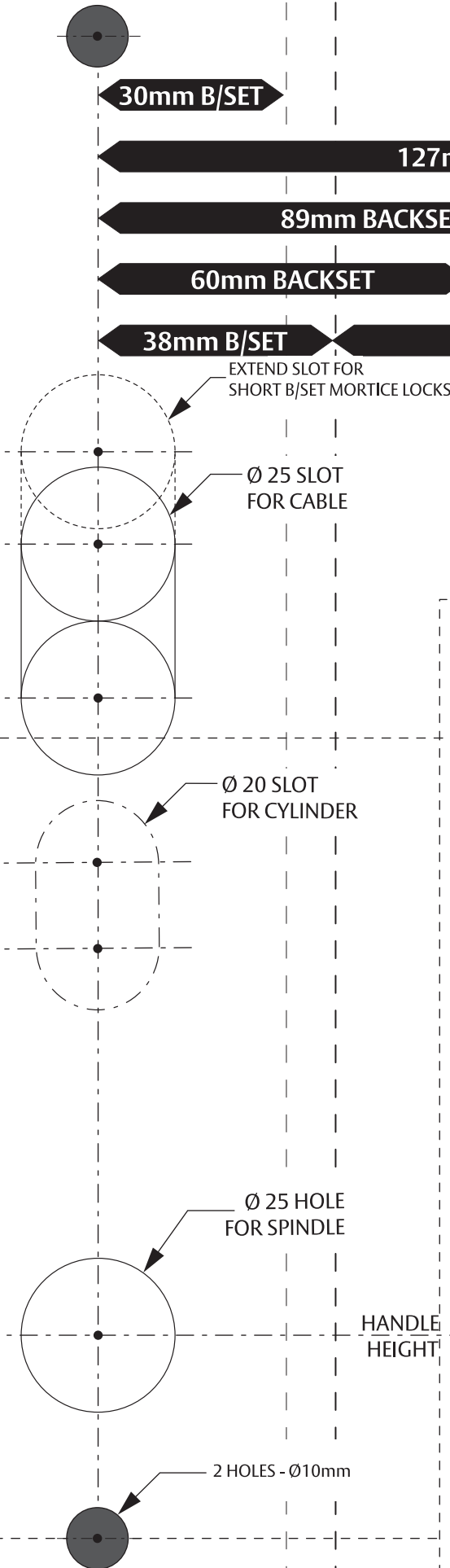


Test the setup and correct lock operation.

ENSURE LOCK IS REMOVED FROM MORTICE BEFORE DRILLING HOLES.

TO PREVENT POSSIBLE DAMAGE TO DOOR FACE DO NOT DRILL RIGHT THROUGH DOOR.

ENSURE ONLY HOLES REQUIRED BY HANDING AND FUNCTION ARE USED.

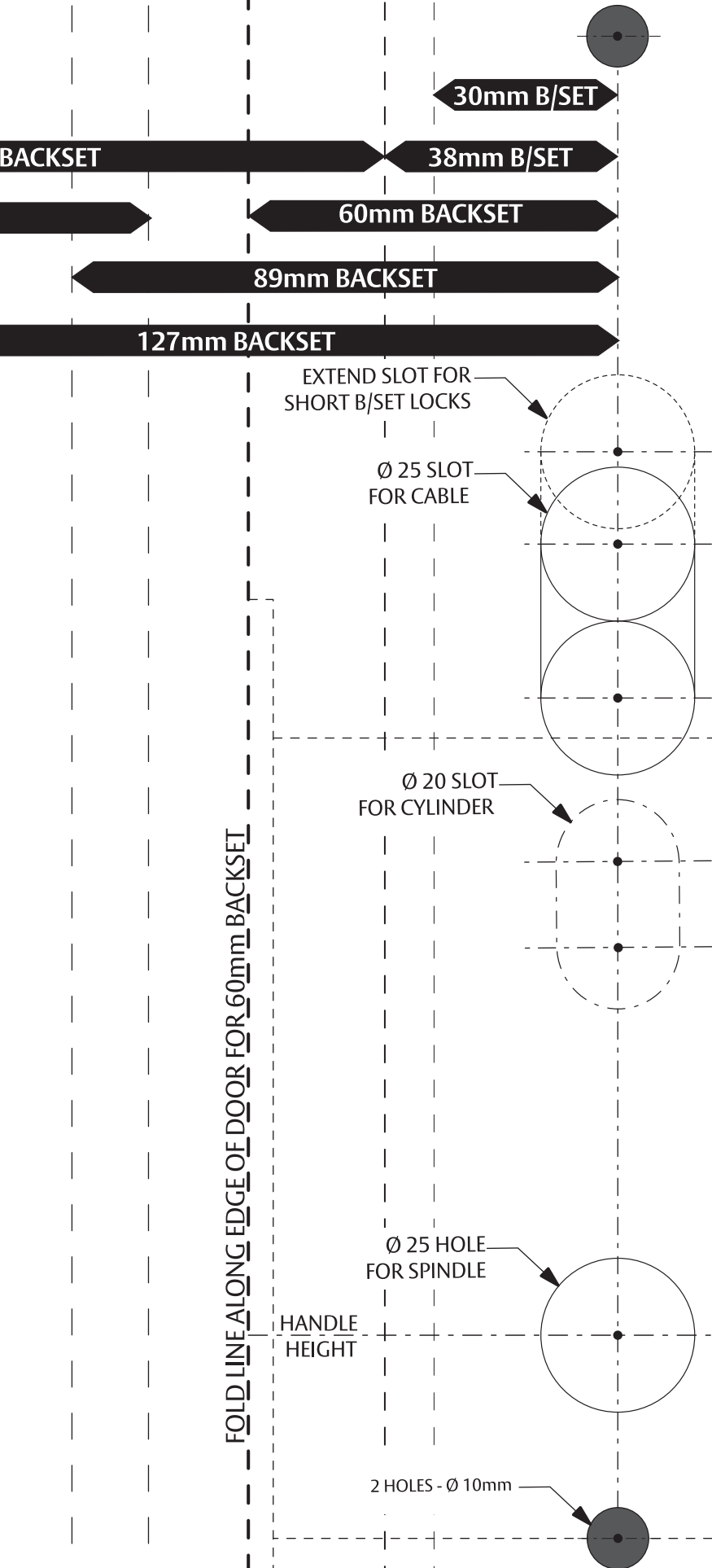


FOLD LINE ALONG EDGE OF DOOR FOR 60mm BACKSET

HANDLE HEIGHT

FOLD LINE ALONG EDGE OF DOOR FOR 60mm BACKSET

HANDLE HEIGHT



FOLD LINE ALONG EDGE OF DOOR FOR 60mm BACKSET

HANDLE HEIGHT