



# Integral Wireless Access Control

**ASSA ABLOY**  
Opening Solutions

Experience a safer  
and more open world



## Access Control



Common access points,  
and emergency exits



## RFID Technology



## User friendly Software



## Features and Flexibility

ASSA ABLOY's Integral Wireless Access Control locking solution provides you with all the features you will need to manage your security requirements and provide peace of mind to all users.

Our locking solutions offer total flexibility, adapting our solutions to your specific needs.

\* Cards supplied in Plain White with custom printing available.

## Features / Overview

- A cost effective, simple to use, simple to set up, offline, Data-on-Card, Access Control System designed for commercial & accommodation facilities.
- A wire free system - no wiring required, saving considerable installation time and money, making it ideal for both new and existing applications.
- Uses RFID cards/fobs for access, that can be easily programmed to allow or restrict access to certain areas or rooms – eliminates the risks and associated costs with managing, losing, or having keys stolen.
- Data collected provides an audit trail of who & when each lock is used
- Simple to retrofit and install - the escutcheon uses the current Australian mortice lock footprint (3772NOHDSS)
- Easily expand the system as required – up to 9999 doors & unlimited users
- Available in two simple to use management options:
  - “Accommodation” allows you to manage the users and doors much the same as a typical Hotel system where the doors are predefined, and users are given access according to the length of their stay.
  - “Commercial” management software operates much the same but allows scheduling and calendar events, suited to a typical commercial building application.
- Simple solution requiring no IP networking knowledge.



# Integral Wireless Access Control

## Integral RFID Proximity Identification Technology

### Product Features

- Stand-alone Electronic Wireless Access Control lockset with RFID Proximity reader
- Powered by 4xAA batteries that provide up to 60,000 operations
- 992 event audit trail
- Stainless Steel Escutcheon
- Uses Australian Mortice lock (3772NOHDSS). 530 tubular latch option also available
- Panic release function – the latch is automatically retracted by inside handle for easy egress in emergency situations
- 3 point steel latch construction with an antifriction mechanism
- High quality card reader that reads with optimal accuracy
- Door Opening Time - Open the door after pressing the handle, automatically locks within 5 seconds
- Electronic Privacy - Denies access when privacy is required
- Passage mode - Gives the ability to leave the door in the unlocked state
- Available with or without key override
- Lever is certified in accordance with AS1428.1-2009 Design for access and mobility
- Fire Rated

### Under Voltage Indication:

Early warning given for low batteries - units will continue to operate for approximately 50 times until such time the batteries can be changed.



### Specifications

Anti-Static Interference	>15000V
Working Humidity	20%-98%
Working Temperature	-20°C - +70°
RFID Card Type	ISO 14443A MIFARE®
Frequency	13.56MHz
Induction Distance	Approx. 30mm
Power	4 x AA Alkaline Batteries

## Access Cards

**User Cards:** Opens locks (when granted applicable access rights) within the “Access Control System” within a specific time period. The access rights for each user are programmed by the software and encoder. User cards will not open doors that have the internal ‘Privacy mode’ set.

**Floor Card:** Unlocks all rooms of a specific floor in a valid period, except if the room is locked from within (Privacy).

**Zone Card:** Unlocks all rooms of a specific zone (building) in a valid period, except if the room is locked from within (Privacy).

**Global Access Card:** Unlocks all doors in a valid period, except if the room is locked from within (Privacy).

**Security Card:** Unlocks all doors in a valid period, including doors that have been locked from within (Privacy).

**One time User Card:** Unlocks selected door during a valid time period but expires after use.



\* Cards supplied in Plain White with custom printing available.

## Access Management Setting Cards

**Locks Identification Card:** Set the Address ID of door lock

**Lock Real-Time Card:** Set the door lock “real time”

**Recorder Card:** Reads the Audit Trail Information from the locking devices

**Cancel Staff Card:** Cancels lost staff cards (Floor, Zone, Global, Security)

## Software Management Cards

**SWA (Software Activation Card):** Activates the card issuing system (Management Software) & Initialises the Locks.

**ICCARD:** Additional SWA Card if SWA card is lost or more than one is required on the same site.

# Integral Access Management Components

## Encoder

- Programs all Cards Types except for the Special IC card, which is used to activate the software management system
- Plug-in-and-Play USB Card Encoder
- Easily learn and use: it easily assigns new users and cards, it modifies them or invalidates lost or stolen cards
- Reads the audit trail of locks when cards are presented
- Windows® based



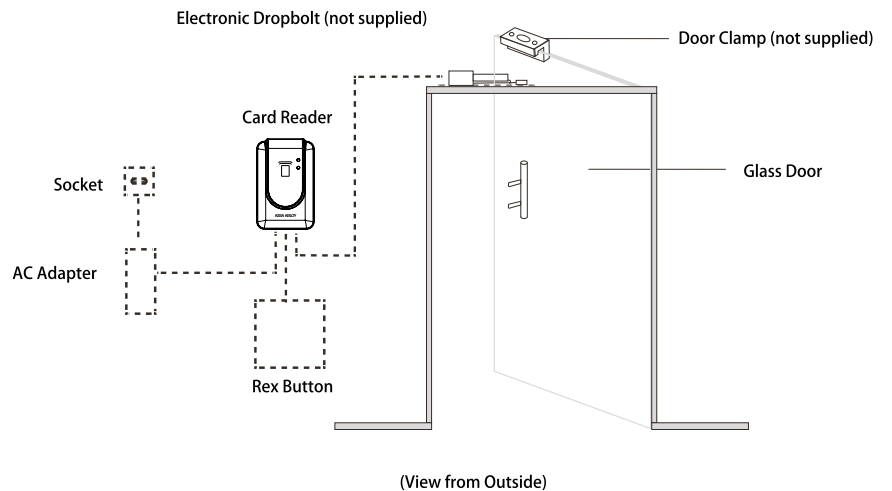
## Specifications

<b>Colour</b>	Black
<b>Material</b>	Flame Retardant ABS
<b>Power Supply</b>	By USB
<b>Operating Current</b>	100mA
<b>RF Frequency</b>	13.56MHz
<b>Size</b>	31mm x 98mm 125mm

# Integral Access Management Components

## Door Access Controller Wall Reader

- For doors where Integral escutcheons are not fitted
- RFID Door Access Controller Wall Reader can be used on an entry door as part of the complete wireless access control system. It can also be used on any other common area doors in the building
- The RFID Door Access Controller Wall Reader can be used with a number of different electronic lock types. Compatible with electronic magnets, drop bolts, motorised locks and electric strikes



## Energy Saving Device

- For minimizing energy consumption in a room when unoccupied.
- The intelligent energy saver controls and manages the electrical installation of the room. It allows the electricity in the room to be switched on after inserting a valid card and during the time that the card is in the energy saver.
- It only works with Integral user cards and it incorporates RFID proximity ISO 14443A MIFARE® technology.



### Specifications

<b>Colour</b>	Black
<b>Power Supply</b>	12VDC
<b>Current Consumption</b>	100mA
<b>Card Type</b>	Mifare Card (MACS) (Only operates with ASSA ABLOY Integral System Cards)
<b>Read Card Distance</b>	20 ~ 50mm
<b>Audit Trail</b>	2000 Events
<b>Input</b>	Rex button signal
<b>Output</b>	Dry node 1 group (NO/NC/COM)
<b>Working Environment</b>	Working Temperature: -10 ~ 70°C Storage Temperature: -25 ~ 125°C Working Humidity: 5% ~ 95%

# Integral

## Access Management Components

### Portable Programmer

#### NFC Data Collection/Configuration:

- For configuring and collecting data from each lock
- Synchronise lock data with the Integral software
- Connects to PC using USB cable
- Extract entry data (audit trail) from the locks (total of 2000 events in memory)
- Can extract multiple locks without uploading
- Upload all records to the Integral software
- Easily set the time of the locks
- Checks card recorded information
- Check lock configuration



#### Specifications

<b>Colour</b>	Black
<b>Communications</b>	USB/NFC
<b>Material</b>	Flame retardant ABS
<b>Working Voltage</b>	3.0V (2pcs AA batteries)
<b>Quiescent Current</b>	<10uA
<b>Working Current</b>	<100mA
<b>Size</b>	177.6mm x 85mm x 30mm
<b>Working Environment</b>	Working temperature: 0~70°C Storage temperature: -25~125°C Working humidity: 5%~95%

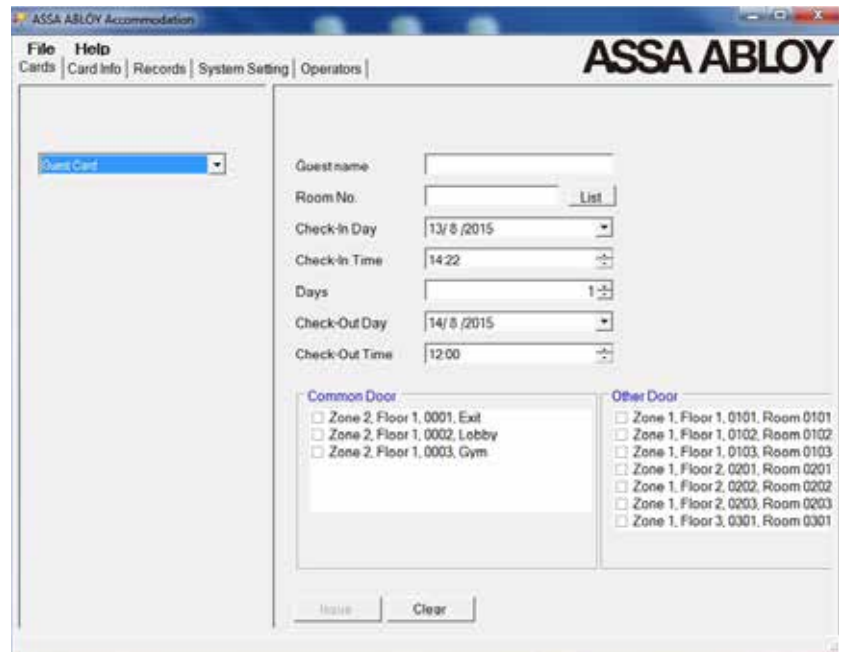


# Integral Access Control Management System

## Software

A simple to use software system that makes it easy to manage and maintain your access control

- Software available in commercial or accommodation versions
- Basic door management software system that is simple to add and delete doors/users as necessary
- Flexible user access rights
- Creates Software Management Cards for activating card issuing system and initializing the door locks
- Creates Access Management Setting Cards for setting the Wireless Access Control Lock ID and “real time” clock.
- Audits: Show and report on;
  - Lists of individual doors
  - Identification of users
  - Doors by floor, building, block, zone etc.
  - A report of every opening/closing registered by all locks/readers
  - All events relating to the operation of the software (Logins etc.)
- Different levels for operators (Administrators)
- Intuitive Windows® based software connected to a USB card encoder to program/issue cards



## Computer Requirements

	ASSA ABLOY Server / Client	ASSA ABLOY Desktop Client
<b>Supported Operating Systems:</b>	Windows 11	Windows 11
	Windows 10	Windows 10
	Windows 7, Windows Server 2003, Windows Server 2008, Windows Server 2008 R2	Windows 7, Windows Server 2003, Windows Server 2008, Windows Server 2008 R2
<b>System Memory</b>	Minimum 4 GB	Minimum 2 GB
<b>Hard Disk</b>	4 GB of Disk Space	1 GB of Disk Space

### Processors:

#### ASSA ABLOY Desktop Client & ASSA ABLOY Server / Client:

- X86: Pentium III-compatible processor or faster (Processor Speed - 1.0 GHz or faster)  
 X64: Minimum: AMD Opteron, AMD Athlon 64, Intel Xeon with Intel EM64T support, Intel Pentium IV with EM64T support (Processor Speed - 1.0 GHz or faster)

# Integral Product Reference Codes Functions

ASSA ABLOY's Integral Wireless Access Control Solution Product.

## Encoder

ITGL910-ENCODER	Card encoder
-----------------	--------------

## Locksets/Escutcheon

ITGL-AUT111SS	ASSA ABLOY Integral Escutcheon - AU Version (35mm - 55mm Door)
ITGL-AUT111KOSS	ASSA ABLOY Integral Escutcheon with Key Override (35mm - 55mm Door)
ITGL-AUT111SS-B	ASSA ABLOY Integral Escutcheon - AU Version (35mm - 55mm Door) with 3772 Mortice Lock
ITGL-AUT111KOSS-B	ASSA ABLOY Integral Escutcheon with Key Override (35mm - 55mm Door) with 3772 Mortice Lock
ITGL-AUT111SS-BL1	ASSA ABLOY Integral Escutcheon (35mm - 55mm DOOR) with 530 Latch 60mm
ITGL-AUT111SS-BL2	ASSA ABLOY Integral Escutcheon (35mm - 55mm DOOR) with 530 Latch 70mm
ITGL-AUT111SS-BL3	ASSA ABLOY Integral Escutcheon (35mm - 55mm DOOR) with 530 Latch 127mm

## Cards

ITGL920-ICCard	Additional System Activation Card: Activates the card issuing system
ITGL910-SWA	System Activation Card: Activates the card issuing system
ITGL920-USERCARD	User Cards: Writable cards All writable cards can program the following cards <ul style="list-style-type: none"> <li>- Setting card</li> <li>- Guard card</li> <li>- Single card</li> <li>- Time card</li> <li>- Zone card</li> <li>- Global card</li> <li>- User card</li> <li>- Floor card</li> <li>- Record card</li> </ul>
ITGL920-USERFOB	User Fob - Writable
ITGL-920-WBB-30/75	User Wrist Band 30-75mm - Writable

## Product Accessories

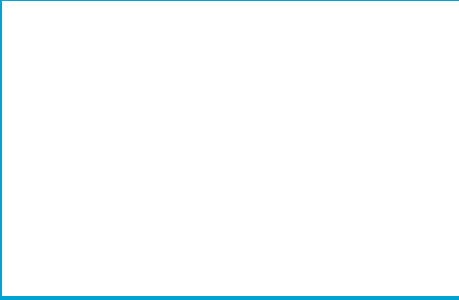
ITGL930-ENERGY	Intelligent energy saving device
ITGL930-WALL	Wall mounted RFID door access controller
ITGL930-LIFT	Lift controller 2 - 27 floors (Includes) & 8 Floors lift card reader
ITGL930-HDD	Hand Held NFC Programming Device
ITGL-SCAR-001	Integral Escutcheon Scar Plate (Pair)

## System Capacity

SYSTEM COMPONENT	LIMITATION
Integral Server	1
Integral Client*	15
Door Locks / Readers	9999
Elevator Floors	27
Users / Cards	Unlimited

**Note:** Each Client must have an encoder.





### The ASSA ABLOY Warranty

Our belief that we manufacture the finest premium products available in today's market place is backed by the ASSA ABLOY Warranty, ensuring that ASSA ABLOY continues to keep Australians safe by delivering security and peace of mind.

For warranty terms and conditions, please visit [assaabloy.com.au](https://assaabloy.com.au) or call **1300WARRANTY**

#### Head Office

ASSA ABLOY Opening Solutions Australia  
235 Huntingdale Road  
Oakleigh Victoria 3166  
Australia  
+61 1300 562 587

[assaabloy.com/au/en](https://assaabloy.com/au/en)

#### Disclaimer

Whilst every effort has been made to ensure that the information (including product images and drawings) contained in this brochure is accurate at the time of publication, ASSA ABLOY Australia Pty Limited ("ASSA ABLOY") recommends that you consult ASSA ABLOY or its agents prior to placing an order to ascertain current information on specific products, as ASSA ABLOY reserves the right to make changes without notice. ASSA ABLOY will not be liable for any injury, loss or damage whatsoever, arising from any errors or omissions in the information contained in the brochure or arising from the use or application of the information contained herein. © 2024 copyright by ASSA ABLOY All rights reserved