

Door Closer - Surface Mounted

DC700

ASSA ABLOY

Door Closer

DC700
Cam-Motion®

Description:

- Door closer with Cam-Motion® technology and height-adjustable guide rail G195 or standard guide rail G193
- Fulfills barrier-free building requirements (DDA/ CEN TR 15894)
- In compliance with EN1154, size EN3-6
- Suitable for fire and smoke protection doors
- For single action doors up to 1400mm wide
- Can be used in four installation types: Hinge and non-hinge sides in standard and frame installation



CE	Abloy OY	10
	PO Box 108 80101 Joensuu, Finland	
1162-CPD-0464	EN 1154:1996+A1:2002	3 8 6 1 1 4

Characteristics:

- Can be used with integrated concealed mounting plate, suitable for fire and smoke protection doors
- Can be used for left and right-handed doors
- Axis continuously height adjustable up to 14mm
- Closing speed, latching speed and back-check adjustable via front facing regulating valves
- Thermodynamic valves for consistent performance
- Adjustable closing force
- Opening angle up to 170°
- Optional delayed action
- Large range of applications
- Standard colours: Silver EV1; White, similar to RAL9016; Brown, similar to RAL8014; Black, similar to RAL9005
- Customized finishes available on request

Characteristics of standard guide rail G193:

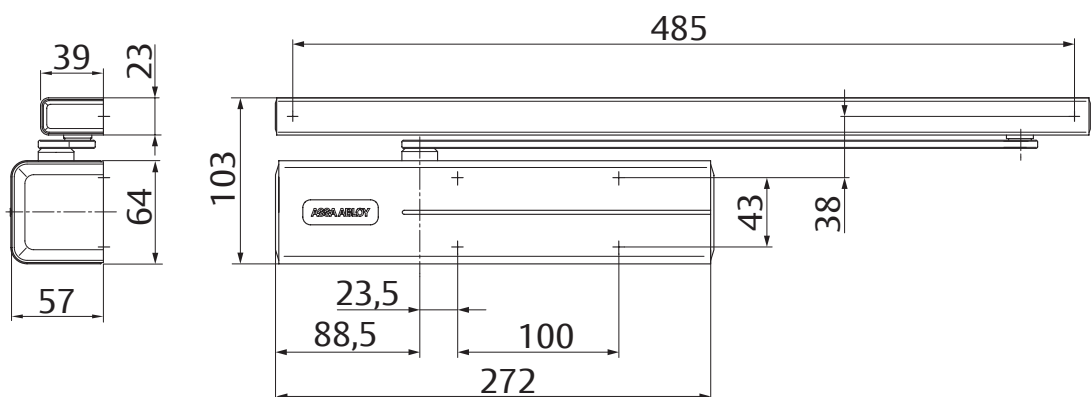
- Without protective cover
- Visible fastening screws
- Installation dimensions: see diagram (dimensions in brackets)

Characteristics for guide rail G195:

- Height-adjustable by 2mm for tolerance
- Concealed fastening screws
- Installation dimensions: see diagram doors

Characteristics of special model DC700AC:

- Opening angle of 180° for standard installation on hinge side
- Other features as in Model DC700



Door Closer - Surface Mounted

DC700

ASSA ABLOY

Door Closer

Technical details for DC700

Technical attributes	
Closing force	EN 3-6
Door width up to	1400 mm
Suitable for fire doors	Yes
Handing	Left / right handed
Mounting method	Standard and frame installation
Closing speed	Variable between 170°-10°
Latching speed	Variable between 10°-0°
Backcheck	Variable above 75°
Max. door opening angle hinge side	Ca. 160°
Max. door opening angle non-hinge side	Ca. 120°
Delayed action	No
Weight	2.7 kg
Height	64 mm
Depth	57 mm
Length	272 mm
Certified in compliance with	EN 1154
CE marking for building products	Yes

Door Closer

Specifications for DC700

Specifications:

ASSA ABLOY Door Closer DC700 with Cam-Motion® technology and guide rail is in compliance with EN1154.

- Closing power continuously adjustable, size EN3-6, for doors up to 1400mm wide
- Closing speed, latching speed and back-check adjustable via front facing regulating valves
- Can be used with integrated concealed mounting plate, suitable for fire and smoke protection doors
- CE approved
- 14mm height adjustable arm system for ease of fitting
- Standard and frame mounting on hinge and non-hinge side of the door
- Suitable for left and right-handed doors

Finishes

- Silver EV1
- White, similar to RAL9016
- Black, similar to RAL9005
- Brown, similar to RAL8014
- Stainless steel full cover
- Stainless steel designed cover
- Customized finish



Door Closer - Surface Mounted

DC700

ASSA ABLOY

Accessories:

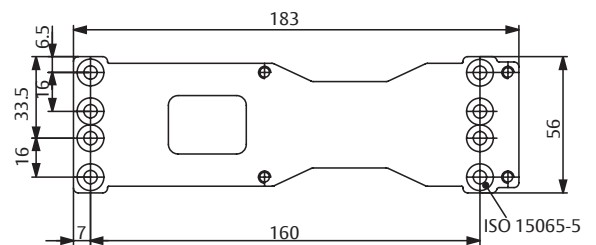
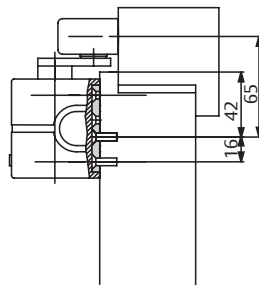
- Standard guide rail G193
- Height-adjustable guide rail G195
- Mounting Plate A120
- Mounting Plate A130 for guide rail G193 & G195
- Angle bracket A104 for guide rail G193
- Mechanical opening damper A153
- Mechanical hold open device A152
(not for fire and smoke protection doors)
- Glass door shoe A166

Door Closer

Accessories for DC700

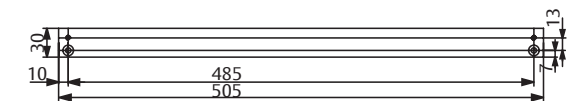
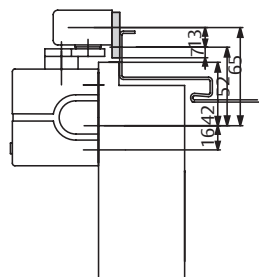
Mounting Plate A120:

For mounting with drilling template according to EN1154 Supplement 1 and for universal use



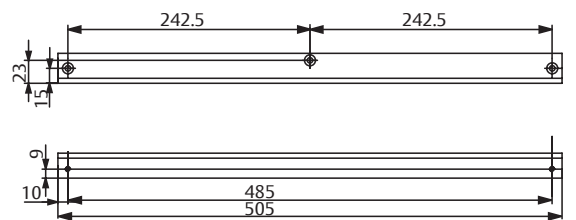
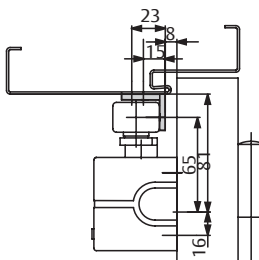
Mounting Plate A130:

For guide rail G193 and G195



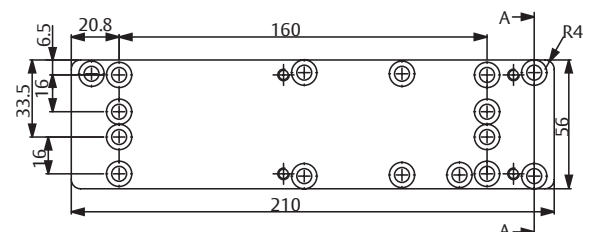
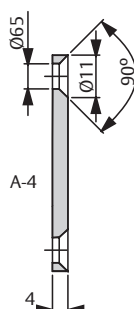
Angle Bracket A104:

Only for standard guide rail G193



Replacement Plate A124:

Replacement Plate A124



Door Closer - Surface Mounted

DC700

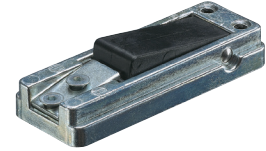
ASSA ABLOY

Door Closer

Accessories for DC700

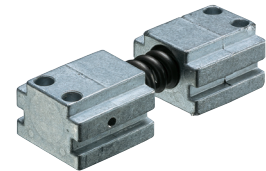
Hold-open device A152:

- Mechanical hold-open device for doors which sometimes need to be secured in the open position
- Simple fitting into guide rail G193 and G195
- Hold open angle: 130° (max.)
- Adjustable hold-open force
- Not approved for use on fire and smoke protection doors



Opening damper A153:

- Helps to prevent the door and door handle from hitting a return wall
- Simple fitting into guide rail G193 and G195
- Opening damper continuously adjustable up to an opening angle of max. 130°
- Does not replace a door stop



Ordering Code

Designation / Item	Order no.
DC700, EN size 3-6, silver EV1	DC700-----DEV1-
DC700, EN size 3-6, white, similar to RAL9016	DC700-----D9016
DC700, EN size 3-6, brown, similar to RAL8014	DC700-----D8014
DC700, EN size 3-6, black, similar to RAL9005	DC700-----D9005
DC700, EN size 3-6, stainless steel, ASSA ABLOY design	DC700-----D35--
DC700, EN size 3-6, customised finish	DC700-----DXXXX
DC700DA, EN size 3-6, silver EV1	DC710-----DEV1-
DC700DA, EN size 3-6, white, similar to RAL9016	DC710-----D9016
DC700DA, EN size 3-6, brown, similar to RAL8014	DC710-----D8014
DC700DA, EN size 3-6, black, similar to RAL9005	DC710-----D9005
DC700DA EN size 3-6, stainless steel, ASSA ABLOY design	DC710-----D35--
DC700DA, EN size 3-6, customised finish	DC710-----DXXXX
DC700AC, EN size 3-6, silver EV1	DC711-----DEV1-
DC700AC, EN size 3-6, white, similar to RAL9016	DC711-----D9016
DC700AC, EN size 3-6, stainless steel, ASSA ABLOY design	DC711-----D35--
DC700AC, EN size 3-6, customised finish	DC711-----DXXXX
Guide rail G193, silver EV1	DCG193-----EV1-
Guide rail G193, white, similar to RAL9016	DCG193-----9016
Guide rail G193, brown, similar to RAL8014	DCG193-----8014
Guide rail G193, black, similar to RAL9005	DCG193-----9005
Guide rail G195, silver EV1	DCG195-----DEV1-

Designation / Item	Order no.
Guide rail G195, white, similar to RAL9016	DCG195-----D9016
Guide rail G195, brown, similar to RAL8014	DCG195-----D8014
Guide rail G195, black, similar to RAL9005	DCG195-----D9005
Guide rail G195, stainless steel	DCG195-----D35--
Guide rail G195, bespoke finish	DCG195-----DXXXX
Mounting plate A120, galvanised	DCA120-----40
Mounting plate A136, non-hinge side, for Guide Rail G193 and G195, 40 mm, silver EV1	DCA136-----EV1-
Mounting plate A130, silver EV1	DCA130-----EV1-
Mounting plate A130, white, similar to RAL9016	DCA130-----9016
Mounting plate A130, brown, similar to RAL8014	DCA130-----8014
Mounting plate A130, black, similar to RAL9005	DCA130-----9005
Mounting plate A130, customised finish	DCA130-----XXXX
Glass door shoe A166, silver EV1	DCA166-----EV1-
Angle bracket A104, silver EV1	DCA104-----EV1-
Angle bracket A104, RAL9016 white	DCA104-----9016
Angle bracket A104, brown, similar to RAL8014	DCA104-----8014
Angle bracket A104, black, similar to RAL9005	DCA104-----9005
Replacement plate A124, galvanised	DCA124-----40
Hold-open device A152	DCA152-----
Opening damper A153	DCA153-----
Drilling gauge A176, ASSA ABLOY door closers	DCA176-----
Screening plate A190, stainless steel	DCA190-----35--